



Submittal Data Sheet: VRFI-18EW-D2B(55)5

INDOOR UNIT



Remote Control



VRFI-18EW-D2B(55)5

ACCESSORIES

- ADVANCED HEALTHY KIT
HEPA/Enzyme/Cold Catalyst Filter
Anion Generator
- THERMOSTAT
- BRIDGE CONTROLLER

Job Name:		Tag #:	
Location		Date:	
General Contractor:		Mechanical Contractor:	
Sales Representative:		Sales Engineer:	
Submitted by:		Drawing #:	
Reference		PO #:	

Vertical Air Circulation Eliminates Room Temperature Gradients

Because cold air sinks and warm air rises, poor air circulation can create uncomfortable temperature gradients in a room. In cooling mode, the vent blade automatically directs air horizontally and upwards, and in heating mode, the vent blade automatically directs air horizontally and downwards, helping to eliminate temperature gradients.

Triple Filtration for Cleaner Air

Mildew-proof washable filter, and optional anti-bacterial fiber adopted to remove dust, odors, bacteria and mildew.

Cold Air Prevention Design

When in heating mode, the fan motor will not start until the coil has warmed up, so that only heated air is circulated during operation.

Multiple Protections

Anti-freezing, temperature sensor malfunction, and fan motor overload protection.

Digital Display

Users and service technicians can use the digital display to see status and protection or error codes.

Thermostat Controller

By using a YMGI bridge controller, North American style thermostats (Nest, Honeywell, Pro1, YMGI etc.) can be used for temperature control, locally or remotely, individually or in groups.

Model		VRFI-18EW-D2B(55)5
Connection Pipes		
Liquid Connecting Pipe Diameter	in.	Ø1/4
Gas Connecting Pipe Diameter	in.	Ø1/2
Drain Pipe External Diameter	in.	Ø11/16
Drain Pipe Thickness Internal Diameter	in.	Ø9/16
Dimensions & Weight Indoor Unit		
Dimensions (W x D x H)	in.	37 x 7 7/8 x 11 3/4
Net / Gross Weight	lbs.	27.1 / 33.1

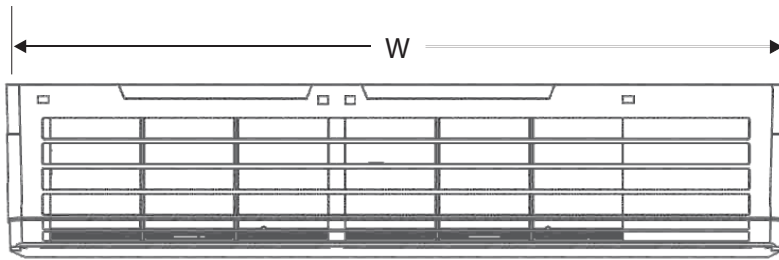
Model		VRFI-18EW-D2B(55)5
Cooling Capacity	Btu/h	18000
Heating Capacity	Btu/h	20000
Power Supply	V/Ø/Hz	208 / 230 / 1 / 60
Power Consumption	W	60
Airflow Volume	m³/h	630 / 550 / 480
	CFM	371 / 324 / 282
Related Current Heating/ Cooling	Amp	0.21
MCA	Amp	0.2625
MOP	Amp	15
Sound Pressure Level (H/M/L)	dB(A)	44 / 41 / 38
Refrigerant		R410A



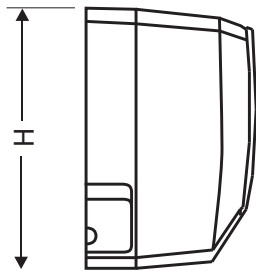
Submittal Data Sheet: VRFI-18EW-D2B(55)5

INDOOR UNIT

Dimensions (inches)	
	inches
W	37"
H	11 3/4"
D	7 7/8"



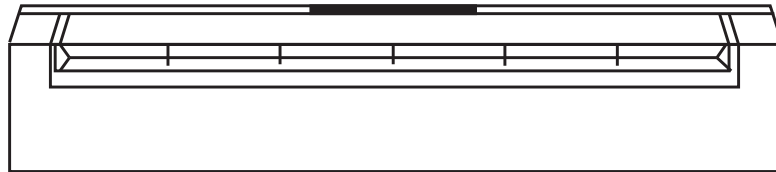
TOP



LEFT

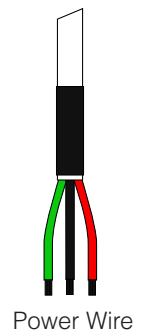
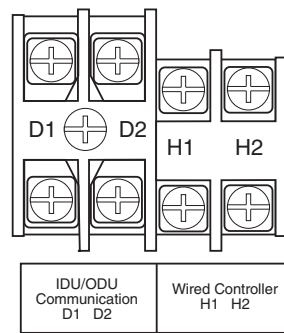
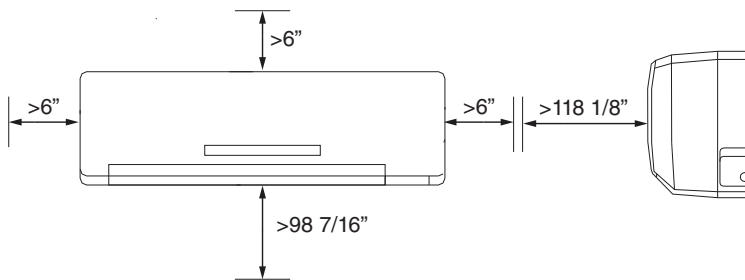


FRONT



BOTTOM WIRING

CLEARANCE



FEATURES

- 208-230/1/60 power input
- Quiet and efficient heating & cooling.
- Wide working ambient temperature ranges
- Compact and stylish design
- Durable ABS molded cabinet
- Built to ETL/UL/CSA/ARI standards
- Easy installation and maintenance

YMGI Group
 601 Arrow Ln, O'Fallon, Missouri 63366
 Phone: 1-866-833-3138
 Fax: 1-866-377-3355
 ymgigroup.com
 sales@ymgigroup.com

Sales Representative or Distributor: