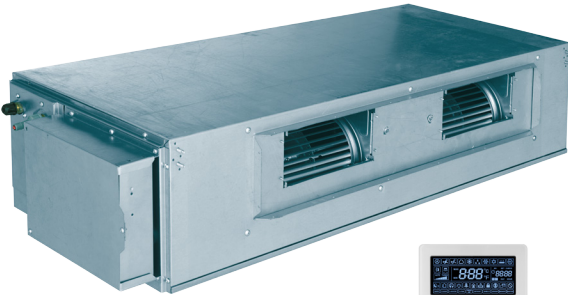




**Submittal Data Sheet: VRFI-24EF-M2B(55)5**

**INDOOR UNIT**



**VRFI-24EF-M2B(55)5**



Wall Controller Included

**ACCESSORIES**

- YMGI BRIDGE CONTROLLER
- THERMOSTAT
- COPPER LINE SETS
- LINE SET COVERS

Job Name:		Tag #:	
Location		Date:	
General Contractor:		Mechanical Contractor:	
Sales Representative:		Sales Engineer:	
Submitted by:		Drawing #:	
Reference		PO #:	

**Medium / High Static Pressure Design**

ESP can be up to 100 Pa (0.4 WC) for central and zoned duct work in residential and light commercial applications.

**Convenient Maintenance**

Washable filter, and convenient service port for easy maintenance.

**Easy Installation**

Easily mount unit from joists or ceilings with threaded rods through four mounting slots.

**Protection Functions**

Built-in anti-freezing, fan motor overload, and temperature sensor malfunction protection.

**Digital Display**

Users and service technicians can use the digital display on the Wall Mount Controller to see status and error codes.

**Thermostat Controller**

By using a YMGI bridge controller, North American style thermostats (Nest, Honeywell, Pro1, YMGI etc.) can be used for temperature control, locally or remotely, individually or in groups.

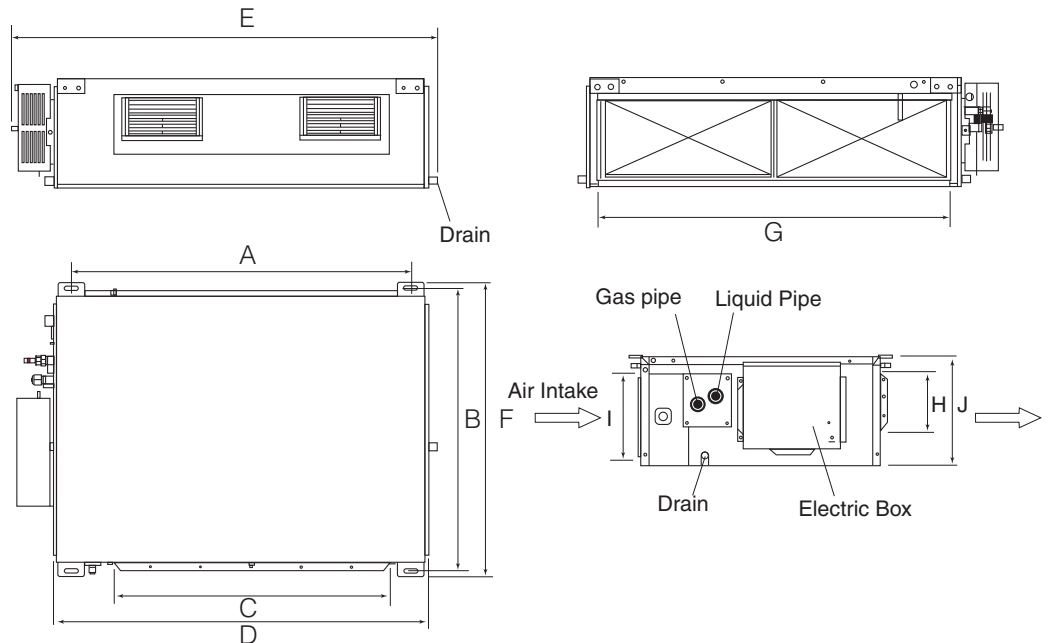
Model		VRFI-24EF-M2B(55)5	
<b>Connection Pipes</b>			
Liquid Connecting Pipe Diameter	in.	Ø3/8	
Gas Connecting Pipe Diameter	in.	Ø5/8	
Drain Pipe External Diameter	in.	Ø1	
Drain Pipe Inner Diameter	in.	13/16	
<b>Dimensions &amp; Weight Outdoor Unit</b>			
Unit Dimensions (W x D x H)	in.	50 x 22 x 10 1/2	
Net / Gross Weight	lbs.	77 / 88	

Model		VRFI-24EF-M2B(55)5	
Cooling Capacity	Btu/h	24000	
Heating Capacity	Btu/h	27000	
Power Supply	V/Ø/Hz	208/230/1/60	
Power Consumption	W	130	
Airflow Volume (H/M/L)	m <sup>3</sup> /h	1100 / 900 / 700	
	CFM	650 / 530 / 410	
Related Current Heating / Cooling	Amp	0.9	
MCA	Amp	1.125	
MOP	Amp	15	
ESP	(std. 70)	Pa	70/0~100
	(std. .28")	WC	up to 0.4"
Condensate Pump Lift from base of unit	in.	39 3/8"	
Sound Pressure Level (H/M/L)	dB(A)	45 / 41 / 37	
Refrigerant		R410A	

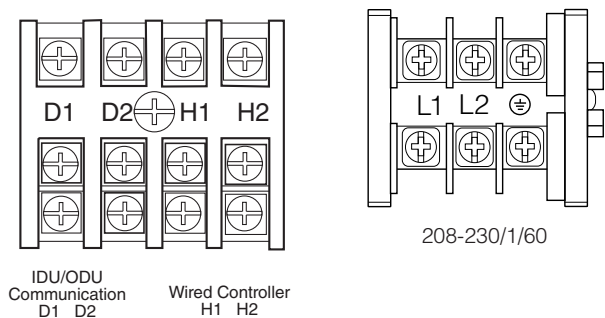


INDOOR UNIT

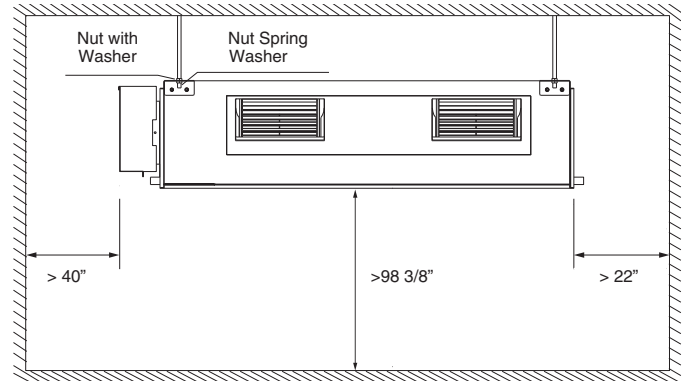
Dimensions (inches)		
	inches	mm
A	43 3/8"	1101
B	20 3/8"	517
C	32 1/4"	820
D	45 5/8"	1159
E	50"	1271
F	22"	558
G	39 1/2"	1002
H	6 1/4"	160
I	9 1/4"	235
J	10 1/2"	268



WIRING



CLEARANCE



FEATURES

- 208-230/1/60 power input
- Quiet and efficient heating & cooling.
- Built-in Protection Functions
- Digital Wall Controller
- Can be controlled with a standard Thermostat by using optional YMGI Bridge Controller
- Pre-charge with dry nitrogen
- Standard flare brass connection valves
- Built to ETL/UL/CSA/AHRI standards
- Bolts on to existing ductwork
- Easy installation and convenient maintenance

**YMGI Group**  
 601 Arrow Ln, O'Fallon, Missouri 63366  
 Phone: 1-866-833-3138  
 Fax: 1-866-377-3355  
 ymgigroup.com  
 sales@ymgigroup.com

Sales Representative or Distributor: