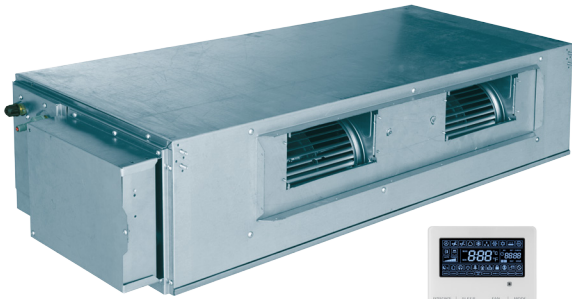




Submittal Data Sheet: VRFI-36EF-M2B(55)5

INDOOR UNIT



VRFI-36EF-M2B(55)5



Wall Controller Included

ACCESSORIES

- YMGI BRIDGE CONTROLLER
- THERMOSTAT
- COPPER LINE SETS
- LINE SET COVERS

Job Name:		Tag #:	
Location		Date:	
General Contractor:		Mechanical Contractor:	
Sales Representative:		Sales Engineer:	
Submitted by:		Drawing #:	
Reference		PO #:	

Medium / High Static Pressure Design

ESP can be up to 100 Pa (0.4 WC) for central and zoned duct work in residential and light commercial applications.

Convenient Maintenance

Washable filter, and convenient service port for easy maintenance.

Easy Installation

Easily mount unit from joists or ceilings with threaded rods through four mounting slots.

Protection Functions

Built-in anti-freezing, fan motor overload, and temperature sensor malfunction protection.

Digital Display

Users and service technicians can use the digital display on the Wall Mount Controller to see status and error codes.

Thermostat Controller

By using a YMGI bridge controller, North American style thermostats (Nest, Honeywell, Pro1, YMGI etc.) can be used for temperature control, locally or remotely, individually or in groups.

Model VRFI-36EF-M2B(55)5		
Connection Pipes		
Liquid Connecting Pipe Diameter	in.	Ø3/8
Gas Connecting Pipe Diameter	in.	Ø5/8
Drain Pipe External Diameter	in.	Ø1
Drain Pipe Inner Diameter	in.	13/16

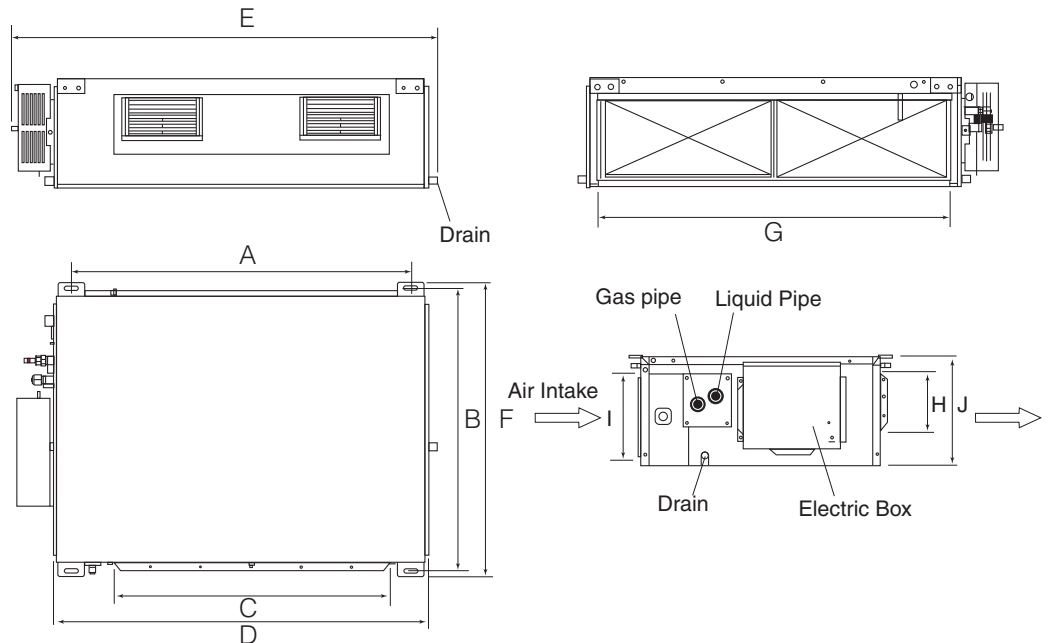
Dimensions & Weight Outdoor Unit		
Unit Dimensions (W x D x H)	in.	48 3/8 x 30 1/2 x 11 3/8
Net / Gross Weight	lbs.	104 / 119

Model		VRFI-36EF-M2B(55)5	
Cooling Capacity	Btu/h	36000	
Heating Capacity	Btu/h	40000	
Power Supply	V/Ø/Hz	208/230/1/60	
Power Consumption	W	200	
Airflow Volume (H/M/L)	m ³ /h	1700 / 1450 / 1100	
	CFM	1000 / 855 / 650	
Related Current Heating / Cooling	Amp	1.4	
MCA	Amp	1.75	
MOP	Amp	15	
ESP	(std. 70)	Pa	70/0~100
	(std. .28")	WC	up to 0.4"
Condensate Pump Lift from base of unit	in.	39 3/8"	
Sound Pressure Level (H/M/L)	dB(A)	46 / 44 / 42	
Refrigerant		R410A	

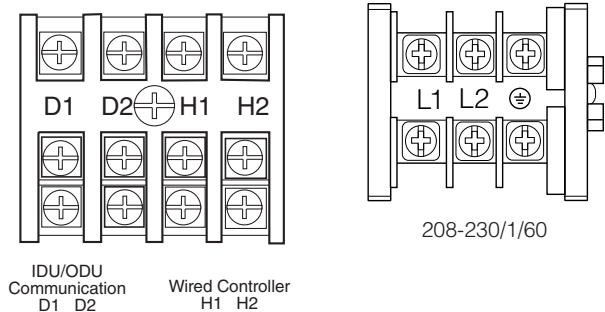


INDOOR UNIT

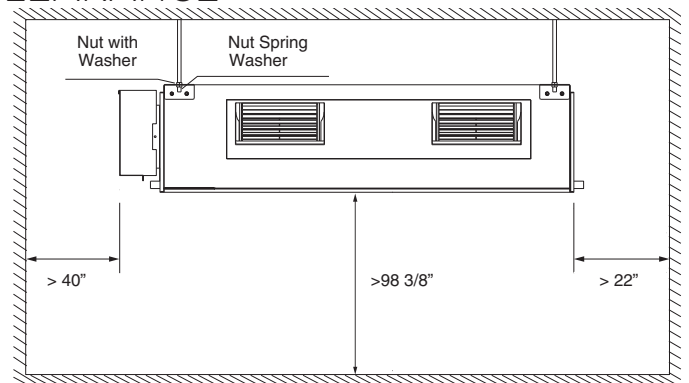
Dimensions		
39-3/4	inches	mm
A	39 3/4"	1101
B	29 1/2"	748
C	32 1/4"	820
D	43 7/8"	1115
E	48 3/8"	1229
F	30 1/2"	775
G	38 1/2"	979
H	6 1/4"	160
I	9 1/8"	231
J	11 3/8"	290



WIRING



CLEARANCE



FEATURES

- 208-230/1/60 power input
- Quiet and efficient heating & cooling.
- Built-in Protection Functions
- Digital Wall Controller
- Can be controlled with a standard Thermostat by using optional YMGI Bridge Controller
- Pre-charge with dry nitrogen
- Standard flare brass connection valves
- Built to ETL/UL/CSA/AHRI standards
- Bolts on to existing ductwork
- Easy installation and convenient maintenance

YMGI Group
 601 Arrow Ln, O'Fallon, Missouri 63366
 Phone: 1-866-833-3138
 Fax: 1-866-377-3355
 ymgigroup.com
 sales@ymgigroup.com

Sales Representative or Distributor: