



Symphony Series HARMONY



**STANDARD
PTAC/PTHP**

**ELITE
WMMP**

FEATURES & SPECIFICATIONS

YMGI Group

601 Arrow Ln, O'Fallon, MO 63366 • info@ymgigroup.com • ymgigroup.com • 866-833-3138

WELCOME



Welcome to Symphony! Harmony Standard (PTAC & PTHP) and Harmony Elite (WMMP)

**Where Comfort and Performance
Live in Perfect Harmony.**

YMGI is dedicated to quality, reliability and comfort. Just as great orchestras work in harmony to realize a perfect performance, so do YMGI products and customer service. YMGI offers products that provide quiet and clean heating and cooling. Enjoy the healthier air, energy savings and peace of mind.

Efficient, Reliable, and Stylish

YMGI products quickly and quietly cool and heat your environment in the most efficient way possible. Both the indoor and outdoor unit have a contemporary style, with a sleek shape and an attractive neutral color. Most importantly, our systems are engineered and built with quality parts that offer reliability and longevity. YMGI stands behind our products and work to ensure our customers are completely satisfied with their YMGI ownership experience.

Meet the Symphony Conductor

As a leading manufacturer of green HVAC technologies, YMGI strives to design products that create harmony between our customers and their environments. YMGI designs, manufactures and sells air conditioners and heat pumps for use in residential, institutional, hospitality, light commercial, and industrial applications. Our HVAC and refrigeration products offer the best value available and are friendly to the environment, contractors and end users.

A Talented Ensemble Working in Perfect Harmony

YMGI's R&D team consists of highly trained and experienced professionals, striving to create new and improve existing HVAC technologies. Our lab team test our designs and components for quality and longevity. Our Quality Assurance teams tightly control all aspects of part manufacture, equipment assembly, unit inspection and shipment.

Discover Maximum Comfort.

If Hospitality is
Your Business,
Make YMGI
Your Partner.

**YMGI is the BEST Value in
State-of-the-Art HVAC Products.**



Table of Contents

Introduction

About PTAC/PTHP

- Introduction to PTAC/PTHP
- PTAC/PTHP Benefits
- PTAC/PTHP Features
- Specifications

About WMMP

- Introduction to WMMP
- WMMP Benefits
- WMMP Features
- Specifications

YMGI Advantages

- Ease of Installation
- Technical Support
- Customer Service
- Warranty Overview
- Credentials and Certification
- Tax Credits

Meet the Symphony Performers

The YMGI Symphony Harmony Series are Packaged Ductless Systems. These full featured, user friendly, self-contained units are simple to install and maintain. They deliver the right amount of warm and cool air whenever it is needed, more efficiently than conventional systems.

The Harmony series consists of YMGI's Packaged Terminal Air Conditioner (PTAC), Packaged Terminal Heat Pump (PTHP), and Wall Mount Mini Packaged (WMMP) systems.

These systems are designed for cooling and heating hotel rooms, dormitories, apartments, condominiums, sunrooms, mobile homes, room additions and more. So, relax and enjoy the personalized comfort that each of our Harmony HVAC systems can provide your guests.



PTAC/PTHP

High Efficiency

HARMONY systems are among the most efficient in the industry, with SEER's up to 12.6 and COP up to 3.6. All of our Harmony systems are AHRI Certified, and UL listed in the US and Canada.

Optimized System Design

Components are both individually and systematically optimized to ensure HARMONY systems work in wide ranges of applications, and deliver the right amount of heating or cooling when you need it, and with maximum efficiency.

How Do PTAC/PTHP Systems Work?

PTAC/PTHP are through-wall mounted systems that consist of 3 major components: the main unit, the wall sleeve, and the grille. PTAC systems utilize an electrically driven compressor to pump refrigerant through coils, pipes, and other components to cool indoor air. PTAC systems use an electric heater for warming the air

PTHP systems use an electrically driven compressor in the same way, but can use a reverse refrigeration cycle as its primary heat source. PTHP also utilizes an electric heater as a back-up heat source when outdoor temperatures fall below freezing.

YMGI's PTAC/PTHP systems are equipped with a locking air damper lever that allow control of the air source. Open the lever to let fresh air in. Close the lever to stop fresh air from entering the room, allowing you to heat or cool more quickly and efficiently.



PTAC/PTHP Construction

PTAC/PTHP systems are larger than through-the-window mounted, or through-the-wall air conditioners/heat pumps. A PTAC/PTHP system's larger size allows for greater cooling and heating capacities, with higher energy efficiency, and at low speeds, noise levels as quiet as 47 dB.

YMGI's PTAC/PTHP systems are mounted through the wall. The knock-down wall sleeve is 42" x 16" x 13 3/4" powder coated steel. This steel sleeve provides a sturdy housing for the refrigeration unit.

The main refrigeration unit consists the evaporator coil, condensing coil, compressor and other components, all mounted to a powder coated steel chassis.



Quiet Operation

Unique low-noise design makes our systems the quietest on the market.

Back-up Electric Heater

YMGI offers PTAC systems equipped with electric heaters, so a single system can take care of all of a room's heating or cooling needs. We also offer PTHP systems with a secondary electric heater that heats spaces in weather that may be too cold to effectively utilize a heat pump.

Perfect with Any Decor

YMGI's HARMONY STANDARD line of PTAC/PTHP systems come in a neutral color that compliments any décor. It has a low profile fascia that conceals the tactile controls and digital display.

The grille controls air flow across and protects the condensing coil. It is attached to the exterior side of the wall sleeve YMGI offers stamped and architectural grilles.

PTAC/PTHP is an easy and efficient way to cool and heat a room with a single piece of equipment. There is no need for refrigeration piping or special wiring. Installation is simple and fast. A small section of the wall is cut out to install the wall sleeve, which houses the main unit. Units can be plugged into a standard wall electrical outlet or hard wired to a disconnect switch box.



YMGI's PTAC/PTHP is equipped with a standard digital panel control. Systems come preconfigured for wired and wireless thermostats.

The PTAC/PTHP systems also come with Energy Management & Thermostat Connections and Dip Switches allowing you to use Door and Occupancy Sensors.



BENEFITS

Perfect Temperature in Every Room

YMGI HARMONY PTAC/PTHP are fully self-contained systems, allowing each guests' room to be independently controlled. Room temperature is set using the control panel. HARMONY systems allow each guest to experience personalized comfort. Make each room cool and dry in the summer and warm and cozy during the winter.



Control All Your Systems from Your Computer

YMGI offers an optional control board and software package that will allow hotel operators to control all of their HARMONY systems in multiple buildings from single Windows PC. When installed and configured, the software will display the full details of each system, and can be viewed from the front desk or remotely. The settings of each system can be monitored or changed remotely, and automatically generated emails can be sent when a system requires maintenance. Up to 170 PTAC/PTHPs can be monitored through a single controller. For buildings with over 170 systems, additional controllers can be installed to expand the network. This can also be used to monitor and control systems on multiple properties.

Indoor Air, and your Health

- Indoor Air is up to 70 times more polluted than outdoor air.
- The average house generate up to 40 lbs of dust annually.
- Headaches and respiratory infections can be caused by poor indoor air quality.
- Allergies and asthma can be aggravated by poor indoor air quality.



Breath Healthier

Conventional ducted systems are notorious for poor air quality. Ductwork used in these systems create an ideal breeding ground for viruses, bacteria, and mold. When air passes through the ducting, dust, pollen and other allergens can be spread throughout a home, and adversely affect your health. Because YMGI mini-split systems have no ducting, your circulated air is cleaner and you can breathe healthier.

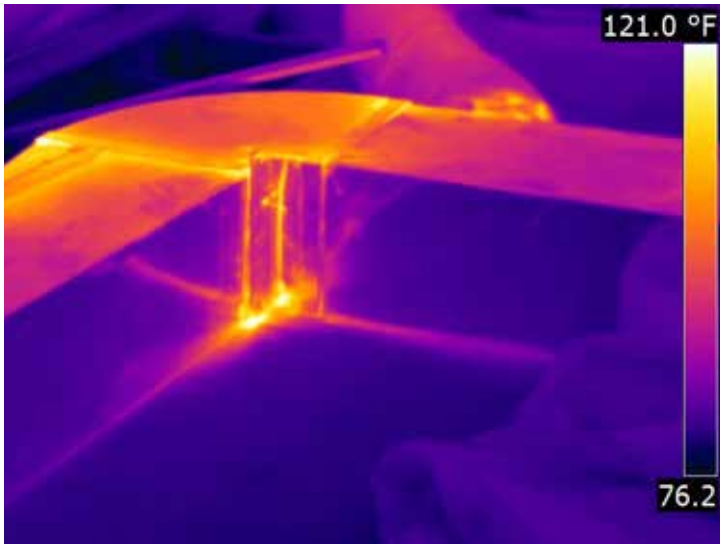
Experience Maximum Air Filtration

Every YMGI indoor unit incorporates our washable and reusable particulate air filter. We also offer advanced filtration options, such as our active enzyme filter to eliminate bacteria, cold catalyst filter for removing pollen, dust, bacteria and harmful airborne chemicals from carpeting, flooring, paint and household cleaners, and our static electric filter for more thorough dust removal. With our selection of specialized filtration options, you can customize your indoor systems to your air quality needs.



Reduce Your Carbon Footprint

As much as half of the energy used in your home, office or business goes toward heating and cooling. On average, over 30% of the heat generated by conventional central air systems escapes from the ducts before it ever reaches your rooms. The Symphony HARMONY systems let you reduce your carbon footprint by eliminating ducts, and eliminating energy waste.



The bright yellow areas in this thermal image, demonstrate the heat loss common in conventional ducted HVAC systems.

Save Money

Every function of a HARMONY STANDARD system is aimed at reducing energy consumption and saving you money with lower energy costs while protecting the environment.

Eco-friendly Refrigerant

YMGI's green mission doesn't end with energy consumption. Older systems use R-22 refrigerant. Every YMGI system uses R-410A refrigerant, which is non-ozone depleting.

Trusted by the Biggest Names in Hospitality

YMGI's PTAC and PTHP systems are used by some of the biggest names in the Hospitality Industry, in multiple locations across the United States.



UNIQUE FEATURES

both ***Simple*** & ***Profound***

Quality & More

Guests are tough on equipment, and YMGI's HARMONY STANDARD systems are designed using thicker steel and fewer plastic parts than many competing systems on the market. Many of our steel components have a baked on powder coated finish, to ensure an attractive and rust free cabinet, and sleeve. The front panel is impact resistant ABS, molded in a neutral color, that easily coordinates with any rooms' decor.

Comfort & Convenience

Condensate Evaporation

For rapid evaporation, the YMGI PTAC/PTHP uses a sling on the outdoor fan blades to throw any condensate onto the outdoor coil. This increases cooling efficiency and minimizes water run-off.

Network Control Ready

This special order option allows you to manage up to 170 systems through a single PC interface. More units and properties can be added with additional control boards.

Sleep Mode

YMGI HARMONY STANDARD systems are designed with Sleep Mode, a feature that can give you the best night's sleep you've ever experienced. In Sleep Mode, YMGI SOLO & CHOIR systems automatically and gently adjust a room's temperature to your body temperature and sleep pattern, so you remain comfortable all night long. Sleep Mode conserves energy as well.

Replace Your Older Systems

YMGI HARMONY STANDARD systems fit into a standard 42 1/4" x 16 1/4" opening, to easily replace older less efficient or higher maintenance units.

With all these great features, discover the best value in state-of-the-art PTAC/PTHP systems.

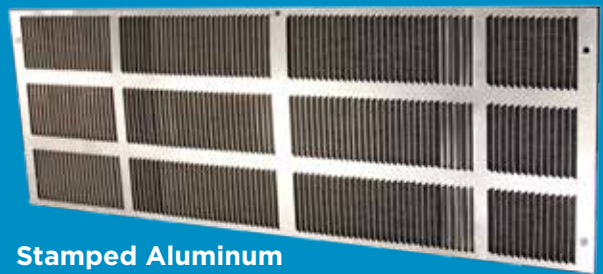


Easy Installation

The HARMONY STANDARD PTAC/PTHP systems use a rigid 4 piece knock-down wall sleeve to fit into a universal 42 1/4" x 16 1/4" opening. The grille is mounted to the wall sleeve on the exterior side, and secured from the inside. Condensate drains to the exterior side of the wall sleeve. A condensate drain kit may optionally be installed on the heat pump models to allow easy drainage during winter. Finally, the system is plugged into a wall outlet or wired to a dedicated disconnect switch.

That's it! Your HARMONY STANDARD system is now ready to cool and heat all your round.

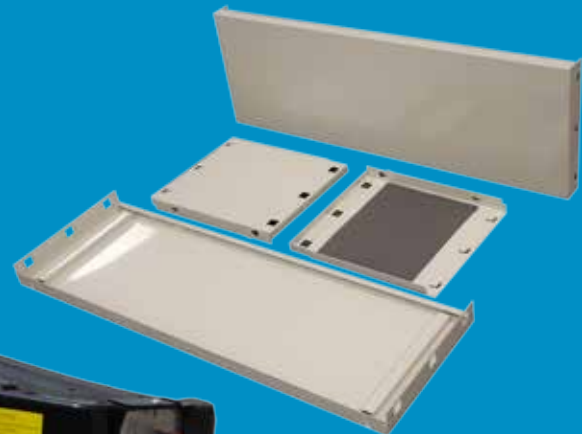
Accessories



**Stamped Aluminum
Standard Grille**



**Brushed Aluminum Finish
Architectural Grille**



**4 Piece
Knock-Down sleeve.**



**One LCDI cord
included with unit**

PTAC/PTHP SYSTEM

YMGI PACKAGED TERMINAL AIR CONDITIONER (PTAC) PACKAGED TERMINAL HEAT PUMP (PTHP)



HARMONY STANDARD Systems are available in cooling capacities from 7,000 to 15,000 Btu/h and heating capacities from 7,000 to 15,000 Btu/h.

The **HARMONY STANDARD** features touch pad controls, a digital display, that provides precise climate control, so your guests can customize their comfort level. Two efficient direct-drive motors power an outdoor condensing cool fan, and a 3 speed cross-flow random pitch indoor blower engineered to deliver cooling and heating evenly throughout any room.



Touch Pad Control with Digital Display



Main Control Board



Washable and Reusable Particulate Air Filter



Condensate Anti-freeze Drainage Valve



Energy Management & Thermostat Connections

PTAC / PTHP Product Specifications

Models 208-230 / 1 / 60	PTAC-07K-12B (43)	PTAC-09K-12B (43)	PTAC-12K-12B (43)	PTAC-15K-12B (43)	PTAC-15K-12B (45)	PTHP-07K-14B (43)	PTHP-09K-14B (43)	PTHP-12K-14B (43)	PTHP-15K-14B (43)	PTHP-15K-14B (45)	
Models 265-277 / 1 / 60	PTAC-07K-12D(43)	PTAC-09K-12D(43)	PTAC-12K-12D(43)	PTAC-15K-12D(43)	PTAC-15K-12D(45)	PTHP-07K-14D(43)	PTHP-09K-14D(43)	PTHP-12K-14D(43)	PTHP-15K-14D(43)	PTHP-15K-14D(45)	
Cooling Capacity (Rated)	Btu/h	7600 / 7700	8800 / 9000	11800 / 12000	14600 / 15000	14600 / 15000	7600 / 7700	8800 / 9000	11800 / 12000	14600 / 15000	14600 / 15000
Heating Capacity (Rated)	Btu/h	-	-	-	-	-	6100 / 6300	7900 / 8100	10500 / 10700	13800 / 13600	13800 / 13600
Cooling Power Input	W	620 / 640	770 / 800	1120 / 1120	1510 / 153	1510 / 1530	620 / 640	770 / 800	1120 / 1120	1510 / 1530	1510 / 1530
Heating Power Input	W	-	-	-	-	-	530 / 540	700 / 720	990 / 1010	1390 / 1370	1390 / 1370
Cooling Power Current	A	3.0 / 2.8	3.9 / 3.7	5.3 / 5.1	7.6 / 6.7	7.5 / 6.7	3.0 / 2.8	3.9 / 3.7	5.3 / 5.1	7.5 / 6.7	7.5 / 6.7
Heating Power Current	A	-	-	-	-	-	3.0 / 208	3.6 / 3.4	4.7 / 4.5	6.0 / 6.6	6.0 / 6.6
Rated Input (Without/With Ele. Heater)	W	736 / 3000	893 / 3000	1394 / 3000	2025 / 3000	2025 / 5000	736 / 3000	972 / 3000	1447 / 3000	2025 / 3000	2025 / 5000
Rated Current (Without/With Ele. Heater)	A	3/14.4-13.0	4.78 / 14.4-3.0	7.57 / 14.4-13.0	11.03/14.4-13.0	11.03 / 24.0-21.7	3/14.4-13.0	5.36 / 14.4-13.0	7.87 / 14.4-13.0	11.03 / 14.4-13.0	11.03 / 24.0-21.7
Rated Ele. Heater	KW	3	3	3	3	5	3	3	3	3	5
MCA	AMP	17.0	17.3	18.6	19.5	28.5	17.0	17.3	18.6	19.5	28.5
Recommended Circuit Breaker HVAC	AMP	20	20	20	20	30	20	20	20	20	30
Air Flow Rate (H/M/L)	CFM	295 / 280 / 260	295 / 280 / 260	320 / 295 / 280	350 / 320 / 300	350 / 320 / 300	295 / 280 / 260	295 / 280 / 260	320 / 295 / 280	350 / 320 / 300	350 / 320 / 300
Dehumidifying Volume	L/h	0.8	1	1.3	1.5	1.5	0.8	1	1.3	1.5	1.5
EER	Btu/h.w	12.2 / 12	11.4 / 11.3	10.5 / 10.7	9.7 / 9.78	9.7 / 9.8	12.2 / 12	11.4 / 11.3	10.5 / 10.7	9.7 / 9.8	9.7 / 9.8
COP	WW	-	-	-	-	-	3.4 / 3.4	3.3 / 3.3	3.1 / 3.1	2.9 / 2.9	2.9 / 2.9
Reference Only-Good for Floor Space, of Mild Load, in Residential Applications	Sq. Ft	100-160	120-180	160-240	210-310	210-310	100-160	120-180	160-240	210-310	210-310
Climate Type		T1	T1	T1	T1	T1	T1	T1	T1	T1	T1
Isolation		I	I	I	I	I	I	I	I	I	I
Moisture Protection		IP24	IP24	IP24	IP24	IP24	IP24	IP24	IP24	IP24	IP24
Allowed Maximum Operation Pressure-High Side	PSI	550	550	550	550	550	550	550	550	550	550
Allowed Maximum Operation Pressure-Low Side	PSI	290	290	290	290	290	290	290	290	290	290
Dimensions of Main Unit WxHxD	In.	42 x 16.0 x 21.5	42 x 16.0 x 21.5	42 x 16.0 x 21.5	42 x 16.0 x 21.5	42 x 16.0 x 21.5	42 x 16.0 x 21.5	42 x 16.0 x 21.5	42 x 16.0 x 21.5	42 x 16.0 x 21.5	42 x 16.0 x 21.5
Dimensions of Wall Sleeve W x H x D	In.	42 x 16 x 13.75"	42 x 16 x 13.75"	42 x 16 x 13.75"	42 x 16 x 13.75"	42 x 16 x 13.75"	42 x 16 x 13.75"	42 x 16 x 13.75"	42 x 16 x 13.75"	42 x 16 x 13.75"	42 x 16 x 13.75"
Dimensions of Carton Box W x H x D	In.	45.5 x 26.6 x 18.1	45.5 x 26.6 x 18.1	45.5 x 26.6 x 18.1	45.5 x 26.6 x 18.1	45.5 x 26.6 x 18.1	45.5 x 26.6 x 18.1	45.5 x 26.6 x 18.1	45.5 x 26.6 x 18.1	45.5 x 26.6 x 18.1	45.5 x 26.6 x 18.1
Weight-Net	lbs.	101.4	103.6	108.0	116.8	116.8	101.4	105.8	110.2	119.0	119.0
Weight-Gross	lbs.	125.7	127.9	132.3	141.1	141.1	125.7	130.1	134.5	143.3	143.3
Refrigerant		R410A	R410A	R410A	R410A	R410A	R410A	R410A	R410A	R410A	R410A
Charge	lbs.	1.12	1.34	1.67	2.38	2.38	1.23	1.56	1.67	2.38	2.38
Fan Type		Cross-flow	Cross-flow	Cross-flow	Cross-flow	Cross-flow	Cross-flow	Cross-flow	Cross-flow	Cross-flow	Cross-flow
Fan Wheel Dia. x Length	In.	4.8 x 27.8	4.8 x 27.8	4.8 x 27.8	4.8 x 27.8	4.8 x 27.8	4.8 x 27.8	4.8 x 27.8	4.8 x 27.8	4.8 x 27.8	4.8 x 27.8
Fan Motor Speed(H/M/L)	RPM	840 / 790 / 740	1030 / 970 / 890	1100 / 1000 / 920	1100 / 1000 / 920	1100 / 1000 / 920	840 / 790 / 740	1030 / 970 / 890	1100 / 1000 / 920	1100 / 1000 / 920	1100 / 1000 / 920
Output of Fan Motor	W	18	21	23	23	23	21	21	23	23	23
Fan Motor RLA	A	0.15	0.36	0.36	0.36	0.36	0.36	0.36	0.36	0.36	0.36
Fan Motor Capacitor	UF	1	1	1	1	1	1	1	1	1	1
Input of Heater	W	2452 / 3000	2452 / 3000	2452 / 3000	2452 / 3000	4087 / 5000	2452 / 3000	2452 / 3000	2452 / 3000	2452 / 3000	4087 / 5000
Evaporator Form		Aluminum Fin / Tube	Aluminum Fin-Copper Tube	Aluminum Fin-Copper Tube	Aluminum Fin-Copper Tube	Aluminum Fin-Copper Tube	Aluminum Fin / Tube	Aluminum Fin-Copper Tube	Aluminum Fin-Copper Tube	Aluminum Fin-Copper Tube	Aluminum Fin-Copper Tube
Pipe Diameter	In.	5 / 16	5/16	9/32	9/32	9/32	5/16	5/16	9/32	9/32	9/32
Row-FPI		2x 18	2x 18	3x 18	3x 18	3x 18	2x 18	2x 18	3x 18	3x 18	3x 18
Coil Length (WxHxD)	In.	27.5 x 9.53 x 1.5	27.5 x 9.53 x 1.5	27.5 x 9.53 x 1.5	27.5 x 9.53 x 1.5	27.5 x 9.53 x 1.5	27.5 x 9.53 x 1.5	27.5 x 9.53 x 1.5	27.5 x 9.53 x 1.5	27.5 x 9.53 x 1.5	27.5 x 9.53 x 1.5
Fuse	A	3.15	3.15	3.15	3.15	3.15	3.15	3.15	3.15	3.15	3.15
Sound Pressure Level (H/M/L)	dB (A)	49 / 48 / 47	51 / 50 / 49	53 / 52 / 51	53 / 52 / 51	53 / 52 / 51	49 / 48 / 47	51 / 50 / 49	53 / 52 / 51	53 / 52 / 51	53 / 52 / 51
Sound Power Level (H/M/L)	dB (A)	59 / 58 / 57	61 / 60 / 59	63 / 62 / 61	63 / 62 / 61	63 / 62 / 61	59 / 58 / 57	61 / 60 / 59	63 / 62 / 61	63 / 62 / 61	63 / 62 / 61
Compressor Type		Rotary	Rotary	Rotary	Rotary	Rotary	Rotary	Rotary	Rotary	Rotary	Rotary
Compressor Brand		RECHI	MITSUBISHI	RECHI	RECHI	PANASONIC	PANASONIC	MITSUBISHI	RECHI	PANASONIC	PANASONIC
Compressor Model		5RS062FAA21	KN073NGFMC	44A282AK&FEK	5PS146FAA21	5PS146FAA21	5RS062FAA21	KN073NGFMC	44A282AK&FEK	5PS146FAA21	5PS146FAA21
Compressor Oil		FV50S	PVE	NMOC Ze-Gles RB68EP	FV50S	FV50S	FV50S	PVE	NMOC Ze-Gles RB68EP	FV50S	FV50S
L.R.A.	A	19	17	29.5	29.5	32.6	19	17	29.5	29.5	32.6
Compressor RLA	A	2.8	3.7	5	5	6.6	2.8	3.7	5	5	6.6
Compressor Power Input	W	630	740	1125	1125	1480	630	740	1125	1480	1480
Overload Protector		B130-140-241E	-	B245-140K-141H	B205-150-141C	B205-150-141C	B130-140-241E	-	B245-140K-141H	B205-150-141C	B205-150-141C
Metering Device		Capillary	Capillary	Capillary	Capillary	Capillary	Capillary	Capillary	Capillary	Capillary	Capillary
Panel Continued	°F	61 - 86	61 - 86	61 - 86	61 - 86	61 - 86	61 - 86	61 - 86	61 - 86	61 - 86	61 - 86
Outdoor Ambient Temp (Cooling)	°F	55 - 115	55 - 115	55 - 115	55 - 115	55 - 115	55 - 115	55 - 115	55 - 115	55 - 115	55 - 115
Outdoor Ambient Temp (Heating)	°F	≤75	≤75	≤75	≤75	≤75	≤75	≤75	≤75	≤75	≤75
Condenser		Aluminum Fin-Copper Tube	Aluminum Fin-Copper Tube	Aluminum Fin-Copper Tube	Aluminum Fin-Copper Tube	Aluminum Fin-Copper Tube	Aluminum Fin-Copper Tube	Aluminum Fin-Copper Tube	Aluminum Fin-Copper Tube	Aluminum Fin-Copper Tube	Aluminum Fin-Copper Tube
Form Pipe Diameter	In.	7/32	7/32	7/32	7/32	5/16	7/32	7/32	7/32	7/32	5/16
Rows-FPI		2x 19	3x 18	3x 18	3x 18	2x 19	3x 18	3x 18	3x 18	3x 18	3x 18
Coil Length (W x H x D)	In.	25.0 x 13.5 x 0.9	25.0 x 13.5 x 0.9	25.0 x 13.5 x 0.9	25.0 x 13.5 x 0.9	25.0 x 13.5 x 0.9	25.0 x 13.5 x 0.9	25.0 x 13.5 x 0.9	25.0 x 13.5 x 0.9	25.0 x 13.5 x 0.9	25.0 x 13.5 x 0.9
Fan Motor Speed	RPM	1370	1370	1370	1370	1370	1370	1370	1370	1370	1370
Output of Fan Motor	W	40	40	65	65	65	40	40	65	65	65
Fan Motor RLA	A	0.42	0.42	0.67	0.67	0.67	0.42	0.42	0.67	0.67	0.67
Fan Motor Capacitor	UF	2	2	2.5	2.5	2.5	2	2	2.5	2.5	2.5
Fan Type		Axial-flow	Axial-flow	Axial-flow	Axial-flow	Axial-flow	Axial-flow	Axial-flow	Axial-flow	Axial-flow	Axial-flow
Fan Diameter	In.	13.75	13.75	13.75	13.75	13.75	13.75	13.75	13.75	13.75	13.75
Sound Pressure Level (H/M/L)	dB (A)	61 / 59 / 57	61 / 59 / 57	63 / 61 / 59	63 / 61 / 59	63 / 61 / 59	61 / 59 / 57	61 / 59 / 57	63 / 61 / 59	63 / 61 / 59	63 / 61 / 59
Sound Power Level (H/M/L)	dB (A)	71 / 69 / 67	71 / 69 / 67	73 / 71 / 59	73 / 71 / 59	73 / 71 / 59	71 / 69 / 67	71 / 69 / 67	73 / 71 / 59	73 / 71 / 59	73 / 71 / 59
Defrosting Method		NA	NA	NA	NA	NA	NA	NA	NA	NA	NA
Loading Quantity 20°GP / 40°GP / 40°HQ	Sets	68 / 144 / 180	68 / 144 / 180	68 / 144 / 180	68 / 144 / 180	68 / 144 / 180	68 / 144 / 180	68 / 144 / 180	68 / 144 / 180	68 / 144 / 180	68 / 144 / 180

YMG I PTAC/PTHP Systems come with multiple LCDI cord configurations to accommodate your installation needs.

RECEPTACLE						
AMPS	15	20	30	15	20	30
RATED VOLTS/ELE. HEATER KW	208-250/2	208-250/3	208-250/5	265-277/2	265-277/3	265-277/5
TIME-DELAY TYPE FUSE (or HACR Circuit Breaker)	15	20*	30	15	20	30

WMMP

Harmony Elite -WMMP

HARMONY ELITE systems feature a contemporary style, perfect for high-end installations. The Elite is available in either a mirror black or brushed aluminum finish.

High Efficiency

HARMONY ELITE systems have been tested up to 13 SEER, higher than any other PTAC systems available.

Independent Dehumidification

Humidity levels are prioritized over temperature levels in a room, allowing the room to heat and cool more quickly and efficiently.

YMGI's WMMP Systems

Better Extreme Weather Performance

While most PTHPs have to rely on an electric heater in ambient temperatures below 35°F, the HARMONY ELITE heat pump will work down to 14°F.

Easy installation

HARMONY Elite WMMP system is completely self-contained in a 37" x 24" x 10" cabinet. Two 8" holes for intake and exhaust need to be cut through the wall, and the system is hung on a mounting bracket over them. We include an easy to use template so you know precisely where to drill and cut. Installation really is that easy.

More Installation Options

HARMONY Elite systems may be wall mounted or floor mounted. With its high/medium ESP outdoor air fan motor the HARMONY ELITE can be installed without ducting on an exterior wall, or with up to 25' of ducting on an interior wall. With optional equipment the HARMONY ELITE can even be mounted for portable use.

Gravity and Pump-Lift Drainage

Condensate collects in the base pan and drains downward through a connected hose. For systems that are mounted lower than the desired drainage area, a condensate pump may be installed.

Quiet Operation

With an optimized acoustic designed air flow tunnel, anti-leak insulation, a multi-speed fan, and the use of separate indoor and outdoor fan motors, the YMGI HARMONY ELITE System is engineered for comfortable and quiet operation. A random pitch cross-flow fan wheel used on the indoor evaporator coil, eliminates the annoying "air rush" noise. Our compressors are designed for smooth and quiet operation. To further reduce noise, YMGI uses a sound and vibration absorbing insulation jacket around the compressor.





User-Friendly Comfort & Convenience

Memory and Auto Restart

If your system should lose power, YMG HARMONY systems remember the operation mode, airflow, and temperature settings and continue normal operation once power is restored.

Digital Display On/Off

Our easy to read LCD display can be turned on or off with the remote control. This feature allows a room to remain dark at night, or you can turn the digital display on and use the display as a night-light

24-Hour On/Off Timer

Set your system to heat or cool any time of day.

Sleep Mode

With the Sleep Mode on, the system will adjust the room target temperature to slowly rise when cooling or fall when heating. Saving energy, and allowing you to sleep comfortably while preventing sudden changes in the room's temperature.

Auto Mode

By continuously sensing and comparing the set temperature to the room temperature, this feature switches between heating and cooling modes automatically delivering the exact amount of warm or cool air needed to ensure maximum comfort.

Air Swing

Motorized louvers that pivot vertically or horizontally, direct air throughout a room, maintaining an even temperature, and eliminating hot or cold spots. The louver motor can also be turned off, so that you can direct air flow to a specific spot. And it can all be adjusted using the remote control.

Hot Start-Up

When heating operation is selected, or when the system transitions from cooling to heating, the indoor fan motor doesn't immediately start. This prevents cold air from being blown into an already cold room. When the indoor unit coil and pipes are heated, the fan engages and circulates warm air.

Precise bending and joining of the copper tubing and refrigeration components also reduce tension and vibration. Weight-balancing rubber is then used to further minimize vibration of the refrigeration tubing in extreme operating conditions. Combining all of these features create a system that runs at 22dB at low speeds, and just 38dB at high.

Quality & Reliability

HARMONY ELITE Systems are thoroughly tested under stringent conditions. We construct each unit to ensure many years of trouble free service, and easy maintenance. YMG stands behind each product with technical support, and warranty coverage.

UNIQUE FEATURES

both **Simple** & **Profound** YMGI Technology

Optimized System Design

Components are both individually and systematically optimized to ensure HARMONY ELITE systems work in wide ranges of applications, and deliver the right amount of heating or cooling when you need it, and with maximum efficiency.

Over-Current & Over-Heat

Built-in protection for over-current, over-heat and over-pressure, ensuring safe operation and longevity of components and the unit.

Flexible Control Options

Your YMGI HARMONY ELITE comes with a standard remote control, but can easily be configured to allow use of a wired or wireless thermostat, or network control.



Thermostat and Network Control Ready

Optional Internal control board can be installed allowing your HARMONY ELITE Systems to work with any manufacturer's wall mounted thermostat.

Controllers can also be added, allowing up to 180 systems to be managed through a single PC interface. More units and properties can be added with additional control boards.

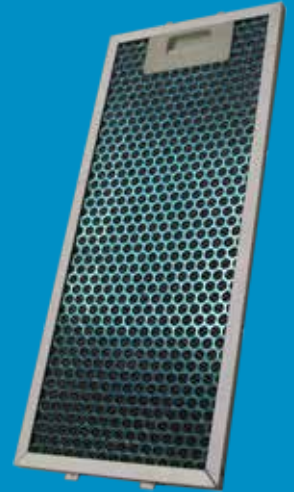
Heating and Cooling Boost

This function boosts cooling or heating capacities at high compressor and fan speed. Rooms reach set temperatures as rapidly as possible.

Environmentally Friendly Inside & Out

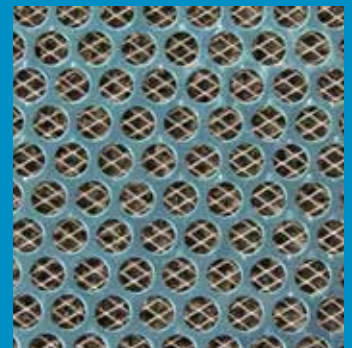
Reusable Washable Filter and Advanced Filters

The YMGI HARMONY ELITE comes with a standard washable particulate filter. We also offer advanced filtration options, such as our active enzyme filter to eliminate bacteria, cold catalyst filter for removing pollen, dust, bacteria and harmful airborne chemicals from carpeting, flooring, paint and household cleaners, and our static electric filter for more thorough dust removal. With our selection of specialized filtration options, you can customize your indoor units to your air quality needs.



Active Carbon and Ionic Filtration

HARMONY ELITE reusable filter contains active carbon to help eliminate smoke, allergens, bacteria and odors. Ionic filtration also helps eliminate the finest particulates.



Easy Filter Cleaning

Filters easily lift from the top of the unit, and are washed with water. Dry thoroughly before reinserting into system.



RoHS Approved Materials

RoHS restricts the use of harmful substances commonly used in electronic equipment. YMGI only uses RoHS approved materials.

Nitrogen-Protected Brazing

Reduced oxidation of joined metal parts, reliable performance and a longer unit life.

Volatile Liquid Coil Cleaning

All component surfaces, joints, and corner weld are thoroughly cleaned to ensure safe clean equipment.

Leakage Checked Refrigerant System

All refrigerant pipes, joints and components are checked for leakage during each step of manufacturing, ensuring every YMGI product is safe.



YMGI WMMP systems are compact and easy to install. They are ideal for historic buildings and eliminate exterior units needing to be mounted outside.



WALL MOUNT MINI PACKAGED



YMG ELITE WMMP WALL MOUNT MINI PACKAGED SYSTEM



HARMONY ELITE Systems are available in cooling capacities from 9,000 to 11,800 Btu/h and heating capacities from 9,200 to 12,000 Btu/h. All **HARMONY ELITE** Systems have a 13 SEER rating. The **HARMONY ELITE** is ideal for high-end applications where elegance and function is desired. It has a slim 10" deep profile, and is available in a mirror black or genuine brushed aluminum finish.

The **HARMONY ELITE** requires two 8" diameter holes for intake and exhaust, making installation simple. Because of its compact venting requirements, installation minimally affects your building's exterior appearance.

The **HARMONY ELITE** can be operated by remote, thermostat, or Network Control. With use of the remote, the display indicates user settings and status. The **ELITE** series is available as AC only, Heat Pump, Heat Pump with Auxiliary Heater, and Heat Pump with Back-up Heater.

ELITE WMMP Product Specifications

Wall Mount Mini Packaged System

MODEL NO.			WMMS-09K-31A(P4)	WMMS-12K-31A(P4)	WMMS-09K-32A(P4)	WMMS-12K-32A(P4)	WMMS-09K-34A(P4)	WMMS-12K-34A(P4)	WMMS-09K-34B(P4)	WMMS-12K-34B(P4)
THERMAL MODE			AC Only		Heat Pump		Heat Pump + Aux Heater		HP + Back Up Heater	
COOLING CAPACITY	Rated ID 80/67F OD 95F	BTU/H 1), 2)	9000	12000	9000	12000	9000	12000	9000	12000
HEATING CAPACITY	Rated ID 70/60F OD 47F (17F)	BTU/H 1), 2)	N/A	N/A	9500(5000)	12800(6800)	9500(5000)	12800(6800)	9500(5000)	12800(6800)
ELECTRIC HEATER	RATED	WATTS	N/A	N/A	N/A	N/A	1500-1800	1500-1800	2400-3000	2400-3000
DEHUMIDIFICATION	RATED	PTS./DAY	42.2	48.6	42.2	48.6	42.2	48.6	42.2	48.6
SEER	RATED	BTU/H.W	13	13	13	13	13	13	13	13
HSPF	RATED	BTU/H.W	N/A	N/A	8.1	8.0	8.1	8.0	8.1	8.0
SOUND LEVEL (POWER)	INDOOR/ OUTDOOR	dB(a)	22-23 / 36-38	22-23 / 36-38	22-23 / 36-38	22-23 / 36-38	22-23 / 36-38	22-23 / 36-38	22-23 / 36-38	22-23 / 36-38
REFRIGERANT	PRE-CHARGED	YES	R410A	R410A	R410A	R410A	R410A	R410A	R410A	R410A
INPUT POWER SOURCE		V / Ph / Hz	A: 115 / 1 / 60 F: 220 / 1 / 50		A: 115 / 1 / 60 F: 220 / 1 / 50		A: 115 / 1 / 60 F: 220 / 1 / 50		B: 208-230 / 1 / 60 F: 220 / 1 / 50	
POWER CONSUMPTION	COOLING	WATTS	960	1130	960	1130	960	1130	960	1130
	HEATING	WATTS	N/A	N/A	920	1095	920	1095	920	1095
TOTAL CURRENT	COOLING	AMP	8.9	9.8	8.9	9.8	8.9	9.8	8.9	9.8
	HEATING	AMP	N/A	N/A	8.0	9.5	8.0 + 5.0	9.5 + 5.0	4 + 10.4	4.7 + 13.0
MCA	FOR WIRE SIZING	AMP	15	18	15	18	20	20	20	20
MINIMUM WIRING SIZE	LENGTH OF LESS THAN 15 FT	AWG	14	14	14	14	12	12	12	12
HVAC CIRCUIT BREAKER	FOR FUSE SIZING	AMP	20	20	20	30	30	30	30	30
INDOOR FAN MOTOR	Fan	TYPE	CROSS-FLOW	CROSS-FLOW	CROSS-FLOW	CROSS-FLOW	CROSS-FLOW	CROSS-FLOW	CROSS-FLOW	CROSS-FLOW
		CFM	230 / 265 / 300	230 / 265 / 300	230 / 265 / 300	230 / 265 / 300	230 / 265 / 300	230 / 265 / 300	230 / 265 / 300	230 / 265 / 300
	MOTOR	RATED WATTS	14 - 15	14 - 15	14 - 15	14 - 15	14 - 15	14 - 15	14 - 15	14 - 15
MAX. SPEED		1350	1350	1350	1350	1350	1350	1350	1350	
OUTDOOR FAN MOTOR	Fan	TYPE	CENTRIFUGAL	CENTRIFUGAL	CENTRIFUGAL	CENTRIFUGAL	CENTRIFUGAL	CENTRIFUGAL	CENTRIFUGAL	CENTRIFUGAL
		CFM	1175	1175	1175	1175	1175	1175	1175	1175
	MOTOR	STYLE	PSC	PSC	PSC	PSC	PSC	PSC	PSC	PSC
CONTROL	THERMOSTAT CONTROL	REPLACING PCB	OPTIONAL	OPTIONAL	OPTIONAL	OPTIONAL	OPTIONAL	OPTIONAL	OPTIONAL	OPTIONAL
	REMOTE CONTROL	INCLUDED	Yes	Yes	Yes	Yes	Yes	Yes	Yes	Yes
	REMOTE CONTROL	INCLUDED	Yes	Yes	Yes	Yes	Yes	Yes	Yes	Yes
	LOW AMBIENT CONTROL	INCLUDED	Yes	Yes	Yes	Yes	Yes	Yes	Yes	Yes
	DEFROST ON DEMAND	INCLUDED	Yes	Yes	Yes	Yes	Yes	Yes	Yes	Yes
ANTI-ICE	INCLUDED	ID/OD	ID/OD	ID/OD	ID/OD	ID/OD	ID/OD	ID/OD	ID/OD	
CONNECTIONS	WIRES	OPEN STRIPPED END	3 Ft.	3 Ft.	3 Ft.	3 Ft.	3 Ft.	3 Ft.	3 Ft.	3 Ft.
		LCD I	OPTIONAL	OPTIONAL	OPTIONAL	OPTIONAL	OPTIONAL	OPTIONAL	OPTIONAL	OPTIONAL
AIR PIPES-ROUND INTAKE / EXHAUST	DIA./MAX. FT.		8 INCHES / 25 Ft.	8 INCHES / 25 Ft.	8 INCHES / 25 Ft.	8 INCHES / 25 Ft.	8 INCHES / 25 Ft.	8 INCHES / 25 Ft.	8 INCHES / 25 Ft.	8 INCHES / 25 Ft.
INSTALLATION	LIMIT-HIGH (TOP TO GROUND)	FT	8	8	8	8	8	8	8	8
	LIMIT-LOW (TOP TO GROUND)	FT	0	0	0	0	0	0	0	0
INSTALLATION KIT	AIR-FLOW PIPES	INTAKE / EXHAUST	1/1	1/1	1/1	1/1	1/1	1/1	1/1	1/1
	GRILLES	INTAKE / EXHAUST	1/1	1/1	1/1	1/1	1/1	1/1	1/1	1/1
WORKING AMBIENT TEMPERATION RANGES (AC / HP)		°F	45-104 / NA		45 to 104 / 35 to 80		45 to 104 / 35 to 80		45 to 104 / 35 to 80	
WEIGHT	NET	LBs	104	106	104	106	104	106	104	106
	GROSS	LBs	112	118	112	118	112	118	112	118
DIMENSION WxHxD	UNIT	INCH	37 x 24 x 10	37 x 24 x 10	37 x 24 x 10	37 x 24 x 10	37 x 24 x 10	37 x 24 x 10	37 x 24 x 10	37 x 24 x 10
	BOX	INCH	39 x 26 x 12	39 x 26 x 12	39 x 26 x 12	39 x 26 x 12	39 x 26 x 12	39 x 26 x 12	39 x 26 x 12	39 x 26 x 12
LOADING CAPACITY	20/40/40/HQ	SETS	130 / 260 / 312	130 / 260 / 312	130 / 260 / 312	130 / 260 / 312	130 / 260 / 312	130 / 260 / 312	130 / 260 / 312	130 / 260 / 312

THE YMGI ADVANTAGE

Ease of Installation

Easier to install than central systems, the hook-up between the VRF outdoor and indoor units generally requires only a three-inch hole through a wall for the conduit that contain the condensate drain hose, wires and refrigeration pipes. The mini outdoor units can be located up to 393.7 feet from the indoor units, and 3300 feet for modular outdoor units, making it possible to place the condensing unit where it can't be seen.

VRF outdoor condensing units are designed to be installed anywhere a central air conditioner or heat pump can be installed. The mini-split models can also be hung on a wall, placed on a balcony, below a deck, in a garage, and several places where a central air conditioner would be impossible to fit.

Professionally trained YMGI-certified technicians can properly install your VRF system, ensuring your system provides you with a lifetime of worry-free comfort.



Technical Support

YMGI offers full technical support for all heating and cooling systems. If you have any questions about the operation of your unit, please consult your owner's manual. It will help you understand unit operation, various functions, and proper operation and maintenance of your system.

If your HVAC technician has any questions about installation or service, we provide technical assistance at **866-833-3138 ext.703**.



Customer Service

When you or your technician calls YMGI hotlines, you will always talk to a live person. Along with our commitment to quality, customer service is the most important part of our business. Our goal is to exceed your expectations. We value each and every customer.

YMGI Group
YMGI HVAC & Solar Supply
601 Arrow Ln
O'Fallon, Missouri 63366
Phone: 1-866-833-3138
Fax: 1-866-377-3355

Sales:
sales@ymgigroup.com

Technical Support:
techsp@ymgigroup.com

Service & Warranty:
customerservice@ymgigroup.com



Warranty Overview

If you aren't satisfied, neither are we. Proper installation matters greatly to the performance and lifespan of your system. Having your system installed by a qualified HVAC installer is the first step.

If for any reason you do not receive a prompt response, you can call our 7/24-hour toll free number at 1-866-833-3138 ext.704 or email to us at customerservice@YMGGroup.com.

To expedite service, please include a copy of your purchase invoice number, contractor installation invoice, unit model number and serial number, a full description of your problem, along with any photos or information that will help us resolve your issue as quickly as possible.

Credentials & Certification

All YMG systems are ETL listed in both the U.S. and Canada. They are also certified by the AHRI and ENERGY STAR® to far exceed the current world standards for energy efficiency

Tax Credits

When purchasing your YMG Symphony Series DC Inverter high energy efficiency system, don't forget to take advantage of any and all available federal tax credits. Many states and utility companies offer tax incentives. Be sure to check YMGGroup.com to see what incentives are available in your area.

Quality & More Stylish Looks

YMG units have clean, modern styling and complement any décor.

Thoroughly Tested Before Packaging

Each YMG system is tested individually, and are packaged only after all safety, operational functions, features and cosmetic details have passed inspection. Our strict quality control tests following standards that are some of the highest of the industry.

Reliable Quality

YMG products are designed using the latest technology and always keep the end user in mind. Using only highest quality parts, each YMG unit is built to last. Best of all, every YMG system is backed by our professional technical support and troubleshooting guidance team.

ENERGY STAR®

ENERGY STAR® is the trusted, government-backed symbol for energy efficiency.. The ENERGY STAR label was established to encourage consumers to identify and purchase energy-efficient products that offer savings on energy bills without sacrificing performance, features, or comfort.



Our DC INVERTER systems, along with many other YMG products, are ENERGY STAR® qualified with up to a 22SEER rating or higher. The Energy Star label guarantees a product meets or exceeds the guidelines of the ENERGY STAR® program.



IF HOSPITALITY IS YOUR BUSINESS MAKE YMGI YOUR PARTNER



YMGI is dedicated to designing, manufacturing and distributing the highest quality, energy saving and environmentally friendly air conditioner and heat pump products, while providing the best service and support to all of our customers. Our mission is to help build a sustainable, efficient and green world.

YMGI Symphony-Ductless & Ducted Heat Pump & Heat Recovery:

- **Symphony SOLAR DC Inverter**
(55) Multiple PV, (56) Single PV; (78) Multiple PH; (79) Single PH
- **Symphony SOLO DC Inverter**
(57)2,3-Single Zone 16 SEER, 09-24K Btu/h
(58)2-Single Zone 16-22 SEER, 09-36K Btu/h
- **Symphony CHOIR DC Inverter**
(59)2--DC Inverter Multiple Zone 16 SEER, 2x09K to 5x12K Btu/h
(59)2S--DC Inverter Multiple Zone 16 SEER 6x09K to 9x12K Btu/h
- **Symphony VRF--DC Inverter HP or Heat Recovery up to 64, 128 Zones.**
- **Symphony HARMONY--Packaged Self-Contained**
42x16" PTAC/PTHP, 26 & 24" TTW, and 37x24" WMMP
- **Symphony CONDUCTOR--Split Type Condensing Units**
Side Discharge SHCR & VPAK

YMGI Group

601 Arrow Ln, O'Fallon, MO 63366
www.ymgigroup.com

YMGI HVAC & Solar Supply

601 Arrow Ln, O'Fallon, MO 63366
www.ymgihvacsupply.com

Tel: 866-833-3138 • Fax: 866-377-3355 • Email: info@YMGIGroup.com
Unit appearance and specifications are subject to change without notice.
Copyright ©2017 YMGI Group