



# Remote Control Features & Functions

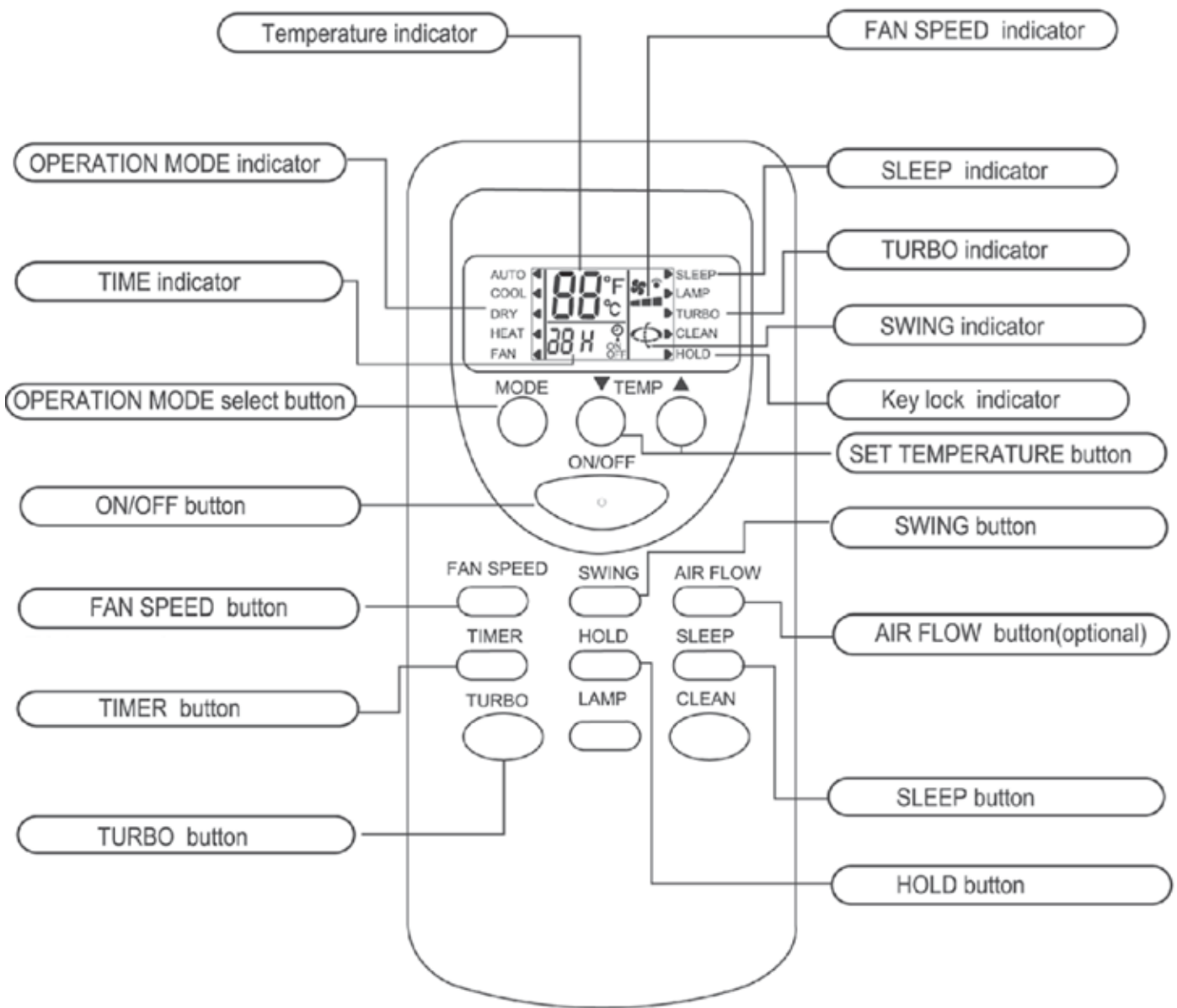


## M1 Remote Control

### USERs GUIDE

## YMGI Group

601 Arrow Ln, O'Fallon, MO 63366 • [info@ymgigroup.com](mailto:info@ymgigroup.com) • [ymgigroup.com](http://ymgigroup.com) • 866-833-3138










The above diagram shows where each remote function display and button is located on your M1 Series Remote Control. Please use this as a reference as you read about various functions of your YMGi unit.

The LAMP and CLEAN buttons serve no function of this remote.

# REMOTE CONTROL FUNCTIONS



## BASIC FUNCTIONS AND OPERATION MODES

- To turn unit on Point REMOTE CONTROL at the unit, press the ON/OFF button.
- Once the system is on, press the MODE button to select the desired mode: AUTO, COOL, DRY, HEAT, or FAN.
- Press the SET TEMPERATURE button to increase or decrease the readings until the desired temperature is displayed. The set temperature range is from 61°F~90°F (16°C~32°C) (It would be automatically set 76°F (25°C) and is not adjustable in AUTO and DRY mode.)
- Press the FAN SPEED button to select the air flow speed you want:
  - Low: Remote displays 
  - Med: Remote displays 
  - Hi : Remote displays 
  - Auto: Remote displays  icon blinks
- Press the SWING button to choose the up/down air flow direction you would like:
  - Natural Flow: Remote displays 
  - Swing: Remote displays  icon blinks
  - Fixed: Remote displays (Louvers are automatically set to a fixed position in DRY Mode)

## TURBO OPERATION

Pressing the TURBO button while cooling or heating. TURBO mode will set the air flow rate to HIGH. Press the TURBO button again to deactivate the TURBO mode.

Note: during TURBO operation, the air flow rate cannot be changed.

## ADJUSTING HORIZONTAL AIR FLOW

### Method 1: Manual adjustment

Adjust the direction by moving the left/right air flow direction fin by hand.

WARNING: Turn indoor unit off before adjusting the direction.

### Method 2: Horizontal & vertical auto swing (three-way air flow)

To adjust the direction using your REMOTE CONTROL, Press the AIR FLOW button. The louvers will automatically oscillate from left to right. Pressing the button again will cause your unit to stop the louvers and set the air flow direction.

## TIMER OPERATION

### Set turning OFF time

Set the time for the unit to turn off and when it is time, the air conditioner will automatically stop operating.

- While the air conditioner is RUNNING, press the TIMER button and the unit will enter the timed switch-OFF mode.
- Press the TIMER button to set how many hours you would like system to run before turning off. The Timer can be set for 1 to 24 hours. Each press of the button will increase the run time by 1 hour.
- The display follows this sequence:  
1H, 2H, 3H, ..... 23H, 24H, CANCEL (countdown timer will appear blank), and then repeat.
- After setting the timed OFF time, the display screen will show the countdown each elapsed hour. The displayed digits indicate the number of hours before the unit will turn OFF.

# REMOTE CONTROL FUNCTIONS

## Set ON Time

To set the time for the unit to turn ON automatically.

- Unit must be in STANDBY mode. Press the TIMER button. The unit will enter TIMER ON mode.
- Press the TIMER to set the time when you would like the unit to switch ON. The ON time can be set from 1 to 24 hours. Each time the button is pressed, will increase the amount of time that will elapse before the system turns on by 1 hour.

The display follows this sequence:

1H, 2H, 3H, ..... 23H, 24H, CANCEL (countdown timer will appear blank), and then repeat.

- After setting the ON time, the display screen will show the countdown for each elapsed hour. The display will show the number of hours remaining until the unit turns ON.

## Erasing Set Times

Using the TIMER button, cycle through the 24 hour settings until the display on the REMOTE CONTROL is blank.

## SLEEP MODE

Use this mode to reduce operating noise while you sleep, etc.

Press the SLEEP button, the air flow sound from the indoor unit is decreased.

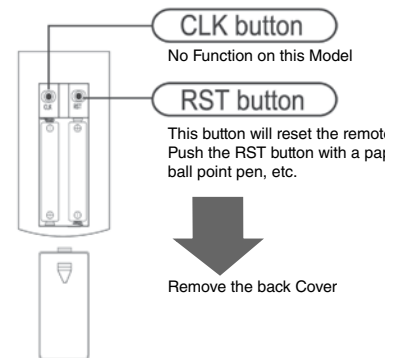
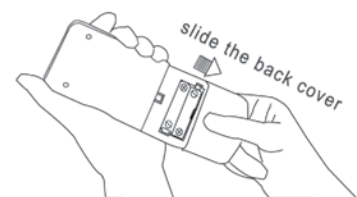
Press the SLEEP button again to cancel the mode.

## Notes:

- Use the sleep mode when you are going to bed. If this mode is used during the day, the capacity is reduced since the ambient temperature is too high.(COOL MODE).
- When the system is in COOLING mode, the room temperature will increase gradually to 4°F (2°C) above the temperature set before SLEEP Mode was turned on.
- When the system is in HEATING Mode, the room temperature will be decrease gradually to 9°F (5°C) below the temperature set before SLEEP Mode was turned on.

## BATTERY REPLACEMENT

- When the signal from the REMOTE CONTROL becomes weak, or if the indoor unit cannot receive commands properly, or the icons on the Remote display screen appear faint or blurry, the batteries need to be replaced. To replace the batteries, slide the back cover open, and replace with two new AAA 1.5W batteries.
- The positive and negative poles must be in the proper positions.
- New batteries of the same type must be used for replacement. If the REMOTE CONTROL is not going to be used for a prolonged period, remove the batteries to prevent the battery leakage from damaging the REMOTE CONTROL.
- If the REMOTE CONTROL is not displaying information properly, you can remove the batteries and reinsert them to clear the display.



# OPERATION TIPS



1. Set a comfortable room temperature. Excessively low room temperature is not good for your health and wastes electricity. Avoid frequently changing the temperature setting.
2. During cooling, minimize direct sunlight. Keep blinds and curtains closed. Make sure all doors and windows are closed to keep the cool air in the room.
3. Avoid the use of heating appliances while the air conditioner is in cooling mode.
4. For best performance, make sure that the air louver is positioned properly: horizontal flow for cooling and downward vertical flow for heating.
5. Avoid hot spots by adjusting the left/right vertical air blades.
6. Position the louvers and the left/right air blades in such a manner as to prevent your body from being exposed directly to air drafts.
7. During prolonged operation, occasionally ventilate the room by opening a window from time to time and allowing fresh air in.
8. In the event of a power failure, the system will store the settings in memory. When restarted, operation will be resumed in the last mode of operation. However, if the timer was set, the unit will only be turned off or on by the timer if the remote control is aimed at the unit. Otherwise the power failure will cause the timer data to be erased from the microprocessor memory.
9. After turning on, allow approximately 3 minutes for cooling, heating or dry operation to start.
10. Before using DRY mode, make sure that the temperature of the room is between 68°F/ 20°C and 81°F/27°C. If DRY mode is turned on and the room is not in this range, it could trigger the Overheat Protection and shut the unit down.
11. When COOL or DRY mode is used, make sure that the room's relative humidity is below 78%. If the unit is used for a prolonged periods of time in high humidity, moisture may form on the air outlet and drip down.
12. Exposing the Indoor Unit Display to direct sunlight may interfere with the unit receiving commands from the remote control. In the event that this occurs, you can block the sunlight or dim the lighting.
13. The remote control is operative in a range of 26 FT (8 meters). If you are outside of that range, the Indoor Unit may not receive commands sent by the REMOTE CONTROL.



YMGI is dedicated to designing, manufacturing and distributing the highest quality, energy saving and environmentally friendly air conditioner and heat pump products, while providing the best service and support to all of our customers. Our mission is to help build a sustainable, efficient and green world.

### **YMGI Symphony-Ductless & Ducted Heat Pump & Heat Recovery:**

- **Symphony SOLAR DC Inverter**  
(55) Multiple PV, (56) Single PV; (78) Multiple PH; (79) Single PH
- **Symphony SOLO DC Inverter**  
(57)2,3-Single Zone 16 SEER, 09-24K Btu/h  
(58)2-Single Zone 16-22 SEER, 09-36K Btu/h
- **Symphony CHOIR DC Inverter**  
(59)2--DC Inverter Multiple Zone 16 SEER, 2x09K to 5x12K Btu/h  
(59)2S--DC Inverter Multiple Zone 16 SEER 6x09K to 9x12K Btu/h
- **Symphony VRF--DC Inverter HP or Heat Recovery up to 64, 128 Zones.**
- **Symphony HARMONY--Packaged Self-Contained**  
42x16" PTAC/PTHP, 26 & 24" TTW, and 37x24" WMMP
- **Symphony CONDUCTOR--Split Type Condensing Units**  
Side Discharge SHCR & VPAK

**YMGI Group**  
601 Arrow Ln, O'Fallon, MO 63366  
[www.ymgigroup.com](http://www.ymgigroup.com)

**YMGI HVAC & Solar Supply**  
601 Arrow Ln, O'Fallon, MO 63366  
[www.ymgihvacsupply.com](http://www.ymgihvacsupply.com)

Tel: 866-833-3138 • Fax: 866-377-3355 • Email: [info@YMGIGroup.com](mailto:info@YMGIGroup.com)  
Unit appearance and specifications are subject to change without notice.

Copyright ©2017 YMGI Group