



Submittal Data Sheet: WMMS-24EW-V2B(59)4

INDOOR UNIT



WMMS-24EW-V2B(59)4

ACCESSORIES

- ADVANCED HEALTHY KIT
HEPA/Enzyme/Cold Catalyst Filter
Anion Generator
- THERMOSTAT
- MOUNTING BRACKETS
- COPPER/WIRE/ACC.SET
- BRIDGE CONTROLLER

Model Number		WMMS-24EW-V2B(59)4
Connection Pipes		
Outer Diameter Liquid	in.	1/4"
Outer Diameter Gas	in.	5/8"
Drain Hose Connection	in.	Ø 0.67
Condensate Pump Installed-Lift	in.	NA
Dimensions & Weight Indoor Unit		
Unit Dimensions WxHxD	in.	42.4 x 12.8 x 9.7
Package Dimensions WxHxD	in.	45.0 x 16.1 x 13.2
Weight Net	lb.	34.2
Weight Packaged	lb.	41.9

Job Name:		Tag #:	
Location		Date:	
General Contractor:		Mechanical Contractor:	
Sales Representative:		Sales Engineer:	
Submitted by:		Drawing #:	
Reference		PO #:	

Wall Mount EW Unit

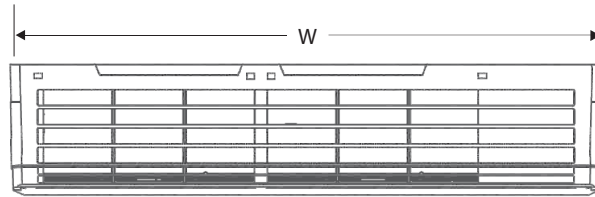
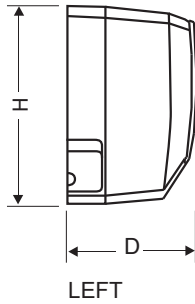
The EW indoor unit is the perfect solution for small rooms (less than 25' long or wide). 09K, 12K, 18K and 24K units are available. EW units come with a standard remote control. Each unit has a digital readout that displays unit settings and technician information. The EW units are efficient and quiet. Installation is simple and easily hung on any wall to allow maximum headroom and floor space.

Items	Unit / Conditions	WMMS-24EW-V2B(59)4
Power Supply	Voltage / Ph / Hz	208-230 / 1 / 60
	Allowed Voltage Range	187-253
Cooling Capacity (Btu/h)	High / Med / Low	27300 / 22000 / 6800
	Max./Stand./Min.	30700 / 23000 / 6800
Heating Capacity (Btu/h)	ID 70/60, OD 47/43 °F	27400
	ID 70/60, OD 17/15 °F	23600
	ID 70/60, OD 17/5 °F	20600
SEER	Btu/h.W	20
HSPF	Btu/h.W	9.0-8.0
Dehumidifying Capacity	Pints/Hr.	4.23
Air Flow (CFM)	Low / High	530 / 706
Air-throw (Ft.)	Horizontal Installation	35-30 Upon Mounting Height/Speed/Temp.
External Static Pressure	Water In.	0
Sound Level	Pressure dB(A) (L/H)	36 / 48
Fan Motor	Model	MP35CJ
	Shaft	Single
	Speed (RMP, H/M/L)	1300 / 900 / 850
	Output (W)	35
	RLA (AMP)	0.2
Fan Wheel	Capacitor (uF)	/
	Type-Piece	Cross Flow-1
Swing/Step Motor	Diameter x Width (In.)	Ø4.2 x 32
	Model	MP35CJ
	Piece	1
	Output (W)	2.5
Input Power of Ele. Heater	Type-W	NA
Electrical Protection Fuse	PCB / Transformer	T3.15A 250V / 0.2A
Evaporator Coil	Type	Aluminum Fin/ Inner Grooved Copper Tube
	Color	Blue
Condensate Pump	Installed-Lift (In.)	NA
Filter	Type-Feature	Washable Particulate
	Qty.	2
Anti-Mildew Function		Yes
Pre-heating Function		Yes
Remember Presets	Power is Lost/Resumed	Yes
Auto-Restart Function	If Power is Resumed	Yes



INDOOR UNIT

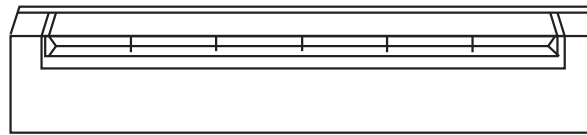
Dimensions (inches)	
W	42.4"
H	12.8"
D	9.7"



TOP

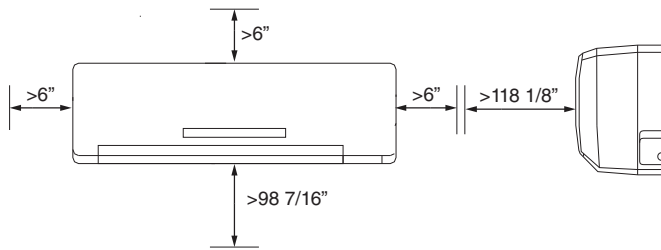


FRONT

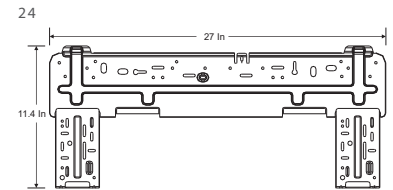
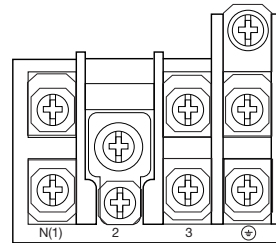


BOTTOM

CLEARANCE



TERMINAL BLOCK MOUNTING PLATE



FEATURES

- 208-230/1/60 power input
- Quiet and efficient heating & cooling.
- LED display shows set temperature & operating modes.
- Motorized louver system quietly distributes air evenly
- "U-TOUCH" Remote Control.
- DC Inverter technology
- Stylish design
- Durable ABS injection molded housing
- Default flare brass connection valves
- Knock-outs for refrigerant pipes and wires
- Built to ETL/UL/CSA/ARI standards
- Easy installation and maintenance

YMGI Group
 601 Arrow Ln, O'Fallon, Missouri 63366
 Phone: 1-866-833-3138
 Fax: 1-866-377-3355
 ymgigroup.com

Sales Representative or Distributor: