



INSTALLATION ACCESSORIES

for VRF and Mini-Split Systems

FEATURES & SPECIFICATIONS

YMGI Group

601 Arrow Ln, O'Fallon, MO 63366 • info@ymgigroup.com • ymgigroup.com • 866-833-3138

Insulated Copper Refrigeration Lines

Applications

- Individual preinsulated rolls are suitable for Residential and Commercial R410A refrigerant installations of mini-splits, heat pumps, VRF and conventional HVAC systems.

Features

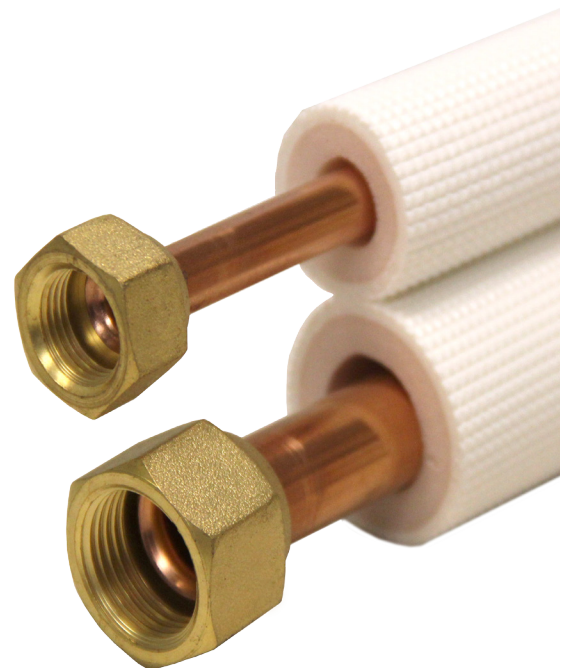
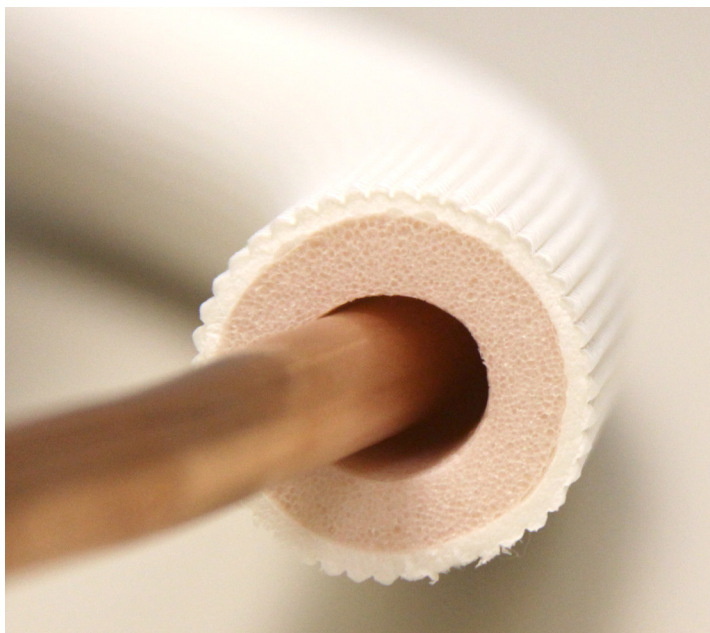
- High quality copper refrigeration lines.
- Excellent corrosion resistance.
- Available in 3/8" and 1/2" thick insulation.
- 15, 25, 50 and 100 foot lengths available.
- Flared ends with flare nut and tube cap to protect threads and keep debris out of refrigeration line prior to installation.
- Flare nut and end can be removed, for brazing.
- Coiled for convenient handling and storage.
- Individually bagged and boxed lines to protect during storage or shipping.

Insulation Characteristics

- High density polyethylene close cell foam insulation is resistant to mold and fungal growth.
- UV resistant molded texture insulation cover makes lines easy to grip and trim.
- Seamless insulation means no tape or adhesive, so installation is faster and neater.
- Soft and flexible insulation foam will not crumble or fall apart over time.
- Working temperature from -40°F up to +221°F
- Fire resistant

Certifications

- UL listed to US and Canadian standards.
- RoHS Certificate approved



Insulated Copper Refrigeration Lines

3/8" Insulation Double Refrigerant lines								
Part No.	Insulation	Pipe	Coil Length		Part No.	Insulation	Pipe	Coil Length
38INST-1438-15	3/8"	1 x 1/4" + 1 x 3/8"	15'		38INST-1438-50	3/8"	1 x 1/4" + 1 x 3/8"	50'
38INST-1412-15	3/8"	1 x 1/4" + 1 x 1/2"	15'		38INST-1412-50	3/8"	1 x 1/4" + 1 x 1/2"	50'
38INST-1458-15	3/8"	1 x 1/4" + 1 x 5/8"	15'		38INST-1458-50	3/8"	1 x 1/4" + 1 x 5/8"	50'
38INST-3858-15	3/8"	1 x 3/8" + 1 x 5/8"	15'		38INST-3858-50	3/8"	1 x 3/8" + 1 x 5/8"	50'
38INST-3834-15	3/8"	1 x 3/8" + 1 x 3/4"	15'		38INST-3834-50	3/8"	1 x 3/8" + 1 x 3/4"	50'
38INST-1438-25	3/8"	1 x 1/4" + 1 x 3/8"	25'		38INST-1438-100	3/8"	1 x 1/4" + 1 x 3/8"	100'
38INST-1412-25	3/8"	1 x 1/4" + 1 x 1/2"	25'		38INST-1412-100	3/8"	1 x 1/4" + 1 x 1/2"	100'
38INST-1458-25	3/8"	1 x 1/4" + 1 x 5/8"	25'		38INST-1458-100	3/8"	1 x 1/4" + 1 x 5/8"	100'
38INST-3858-25	3/8"	1 x 3/8" + 1 x 5/8"	25'		38INST-3858-100	3/8"	1 x 3/8" + 1 x 5/8"	100'
38INST-3834-25	3/8"	1 x 3/8" + 1 x 3/4"	25'		38INST-3834-100	3/8"	1 x 3/8" + 1 x 3/4"	100'

1/2" Insulation Single Refrigerant lines								
Part No.	Insulation	Pipe	Coil Length		Part No.	Insulation	Pipe	Coil Length
12INNT-14-50	1/2"	1 x 1/4"	50'		12INNT-34-50	1/2"	1 x 3/4"	50'
12INNT-14-100	1/2"	1 x 1/4"	100'		12INNT-34-100	1/2"	1 x 3/4"	100'
12INNT-14-164	1/2"	1 x 1/4"	164'		12INNT-34-164	1/2"	1 x 3/4"	164'
12INNT-38-50	1/2"	1 x 3/8"	50'		12INNT-78-50	1/2"	1 x 7/8"	50'
12INNT-38-100	1/2"	1 x 3/8"	100'		12INNT-78-100	1/2"	1 x 7/8"	100'
12INNT-38-164	1/2"	1 x 3/8"	164'		12INNT-78-164	1/2"	1 x 7/8"	164'
12INNT-12-50	1/2"	1 x 1/2"	50'		12INNT-118-50	1/2"	1 x 1 1/8"	50'
12INNT-12-100	1/2"	1 x 1/2"	100'		12INNT-118-100	1/2"	1 x 1 1/8"	100'
12INNT-12-164	1/2"	1 x 1/2"	164'		12INNT-118-164	1/2"	1 x 1 1/8"	164'
12INNT-58-50	1/2"	1 x 5/8"	50'		12INNT-112-50	1/2"	1 x 1 1/2"	50'
12INNT-58-100	1/2"	1 x 5/8"	100'		12INNT-112-100	1/2"	1 x 1 1/2"	100'
12INNT-58-164	1/2"	1 x 5/8"	164'		12INNT-112-164	1/2"	1 x 1 1/2"	164'

1/2" Insulation Double Refrigerant lines								
Part No.	Insulation	Pipe	Coil Length		Part No.	Insulation	Pipe	Coil Length
12INST-1438-15	1/2"	1 x 1/4" + 1 x 3/8"	15'		12INST-1412-50	1/2"	1 x 1/4" + 1 x 1/2"	50'
12INST-1412-15	1/2"	1 x 1/4" + 1 x 1/2"	15'		12INST-1458-50	1/2"	1 x 1/4" + 1 x 5/8"	50'
12INST-1458-15	1/2"	1 x 1/4" + 1 x 5/8"	15'		12INST-3858-50	1/2"	1 x 3/8" + 1 x 5/8"	50'
12INST-3858-15	1/2"	1 x 3/8" + 1 x 5/8"	15'		12INST-3834-50	1/2"	1 x 3/8" + 1 x 3/4"	100'
12INST-3834-15	1/2"	1 x 3/8" + 1 x 3/4"	25'		12INST-1438-100	1/2"	1 x 1/4" + 1 x 3/8"	100'
12INST-1438-25	1/2"	1 x 1/4" + 1 x 3/8"	25'		12INST-1412-100	1/2"	1 x 1/4" + 1 x 1/2"	100'
12INST-1412-25	1/2"	1 x 1/4" + 1 x 1/2"	25'		12INST-1458-100	1/2"	1 x 1/4" + 1 x 5/8"	100'
12INST-1458-25	1/2"	1 x 1/4" + 1 x 5/8"	25'		12INST-3858-100	1/2"	1 x 3/8" + 1 x 5/8"	100'
12INST-3858-25	1/2"	1 x 3/8" + 1 x 5/8"	25'		12INST-3834-100	1/2"	1 x 3/8" + 1 x 3/4"	100'
12INST-3834-25	1/2"	1 x 3/8" + 1 x 3/4"	50'					
12INST-1438-50	1/2"	1 x 1/4" + 1 x 3/8"	50'					

PVC Line Set Covers

Applications

Complete your mini split installation by covering the refrigeration lines, wiring and drainage lines with these easy to install Line Set Covers for a professionally finished look.

Great for interior and exterior use, as well as electrical, plumbing applications.

Features

- Gives a clean, finished look to any system installation.
- Easy-to-add to new or previous installation
- High quality UV resistant PVC construction.
- Molded in color.
- Easy to assemble and mount.
- Can be painted to match interior or exterior decor.

Characteristics

- Protects refrigeration lines from elements and pests.
- Gives installations a clean finished professional finish.

Certifications

- RoHS Certificate approved.



LNCR-COM-ELBV91



LNCR-COM-ELBF91



LNCR-COM-COUP1



LNCR-COM-SOFT1



LNCR-COM-SOFT2



LNCR-COM-STRT1-39



LNCR-COM-STRT2-72

Part No.	Description	Available Colors
LNCR-COM-COUP1	YMGI Lineset Cover Coupler 9-18k	White / Beige
LNCR-COM-COUP2	YMGI Lineset Cover Coupler 24-36k	White / Beige
LNCR-COM-ELBF91	YMGI Line Cover Horizontal 90 Degree Elbow 9-18k	White / Beige
LNCR-COM-ELBF92	YMGI Line Cover Horizontal 90 Degree Elbow 24-36k	White / Beige
LNCR-COM-ELBV91	YMGI Line Cover Vertical 90 Degree Elbow 9-18k	White / Beige
LNCR-COM-ELBV92	YMGI Line Cover Vertical 90 Degree Elbow 24-36k	White / Beige
LNCR-COM-INLTS1	YMGI Line Set Cover Wall Inlet 09k-18k	White / Beige
LNCR-COM-INLTS2	YMGI Line Set Cover Wall Inlet 24k-36k	White / Beige
LNCR-COM-TWIST1	YMGI Line Set Cover Twist 1 09k-18k	White / Beige
LNCR-COM-TWIST2	YMGI Line Set Cover Twist 2 24k-36k	White / Beige
LNR-COM-RDER1	YMGI Line Set Cover Reducer1 09k-18k	White / Beige
LNR-COM-RDER2	YMGI Line Set Cover Reducer2 24k-36k	White / Beige
LNCR-COM-ENDF1	YMGI Line Set Cover End Cover	White / Beige
LNCR-COM-ENDF2	YMGI Line Set Cover End Cover	White / Beige
LNCR-COM-COUP1	YMGI Line Set Cover Coupler	White / Beige
LNCR-COM-SOFT1	YMGI Line Cover Soffit End Piece	White / Beige
LNCR-COM-SOFT2	YMGI Line Cover Soffit End Piece	White / Beige
LNCR-COM-STRT1-39	YMGI Line Cover 39 Inch Straight Section	White / Beige
LNCR-COM-STRT2-31	YMGI Line Cover 31 Inch Straight Section	White / Beige
LNCR-COM-STRT2-72	YMGI Line Cover 72 Inch Straight Section	White / Beige White / Beige

Mini Split Installation Accessories

PVC Risers

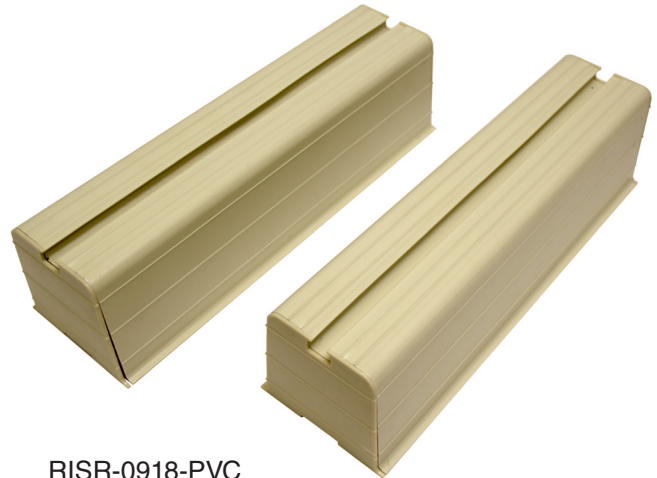
- High quality UV resistant PVC Risers keep your outdoor unit level and raised above the ground.
- Prevents corrosion from moisture.
- Prevents debris from accumulating in the bottom pan of the outdoor unit .

Wind Baffle

- Protects against high winds on elevated or rooftop installations that can prevent your Outdoor Unit fan from working at peak efficiency.
- Reduces the effects of wind chill on the condensor coil.

Mounting Brackets

- Allows mounting of Outdoor Unit to side of a home, building, or beneath a balcony or deck.
- Available in powder coated and stainless steel finishes.



RISR-0918-PVC

BRKT-0918-ST3



BRKT-0918-SC3



WindBaffle-1860

WindBaffle-0912

Part No.	Description
RISR-0918-PVC	Riser for 9-18k Units. PVC Pair.
RISR-1836-PVC	Riser for 18-36k Units. PVC Pair.
RISR-3660-Rubber	Riser for 36-60k Units. PVC Pair.
RISR-72120-Rubber	Riser for 72-120k Units. Rubber Pair.
WindBaffle-0912	Wind Baffle for 09-12K
WindBaffle-1860	Wind Baffle for 18-60K
BRKT-0918ST3	YMGI Stainless Steel Mounting Bracket 9 to 18k ODU
BRKT-1860-ST3	YMGI Stainless Steel Mounting Bracket for 18 to 60K ODU
BRKT-0918-SC3	YMGI Beige Powder Coating Mounting Bracket 9 to 18K ODU
BRKT-1860-SC3	YMGI Beige Powder Coating Mounting Bracket 18 to 60K ODU

PTAC & WMMP Accessories

4 Piece Knock-Down Sleeve

- Rigid 4 piece knock-down wall sleeve.
- Fits into a universal 42 1/4" x 16 1/4" opening.

Standard Grille

- Stamped Aluminum

Architectural Grille

- Brushed Aluminum Finish



PTAC-00-SLEV1



PTAC-00-GRLL1



PTAC-GRLL-002



PTAC-GRLL-002



PTAC-GRLL-002

Part No.	Description
PTAC-00-SLEV1	42"x16" 4 Piece Knock-Down sleeve.
PTAC-00-GRLL1	YMGI PTAC Stamped Aluminum Standard Grille
PTAC-GRLL-002	YMGI PTAC Brushed Aluminum Finish Architectural Grille
need part #	WMMP Round Outlet Cover
need part #	WMMP Round Outlet Hooded Cover



YMGL-WALLV-WV1



YMGL-ROOFA-RV4



YMGL-WALLV-WV2



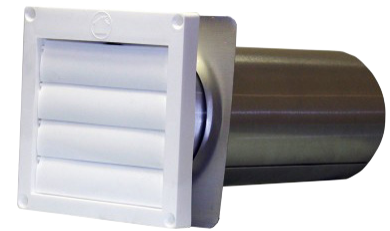
YMGL-SOFFITV-SV1



YMGL-EAVEV-EV1



YMGL-EAVEV-EV2



YMGL-WALLV-WV3



YMGL-WALLV-WV4

Part No.	Description
YMGL-WALLV-WV1	Plastic Mini Louver Wall Vent
YMGL-ROOFA-RV4	Metal Roof Vent Cap – Aluminum
YMGL-WALLV-WV2	Heavy Duty Galvanized Vent Hood – Tail Included
YMGL-SOFFITV-SV1	Plastic Eave Vent- Exhaust
YMGL-EAVEV-EV1	Micro Louver Eave Vent
YMGL-EAVEV-EV2	Metal Eave Vent with Screen and Flapper
YMGL-WALLV-WV3	Louvered Plastic Vent Hoods with Tailpipe
YMGL-WALLV-WV4	Plastic Wide Mouth Vent Hood

Grilles



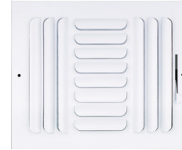
YMGL-3SW



YMGL-2SW



YMGL-1SW



YMGL-3CB



YMGL-2CB



YMGL-4CB



YMGL-1CB



YMGL-4SW



YMGL-4CSD



YMGL-1RAF



YMGL-ASV



YMGL-AEV



YMGL-CAD



YMGL-BRA



YMGL-1RA



YMGL-BB



YMGL-CSF



YMGL-FL



YMGL-FR



YMGL-110M



YMGL-VF-AB/VF-BB/VF-DB

Part No.	Description
YMGL-3SW	Three Way Register
YMGL-2SW	Two Way Register
YMGL-1SW	One Way Register
YMGL-3CB	Curved Blade Three Way Register
YMGL-2CB	Curved Blade Two Way Register
YMGL-4CB	Curved Blade Four Way Register
YMGL-1CB	Curved Blade One Way Register
YMGL-4SW	Four Way Register
YMGL-4CSD	Ceiling Square Diffuser
YMGL-1RAF	Return Air Filter Grille with Frame
YMGL-ASV	Air Supply Valves
YMGL-AEV	Air Exhaust Valves
YMGL-CAD	Cone Air Diffuser
YMGL-BRA	Baseboard Return Air Grille
YMGL-1RA	Return Air Grille
YMGL-BB	Baseboard Register
YMGL-CSF	Contemporary Steel Floor Register
YMGL-FL	Floor Register
YMGL-FR	Floor Return Air Grille
YMGL-110M	110M Registers
YMGL-VF-AB/VF-BB/VF-DB	Victorian Floor Register

THE YMGI

ADVANTAGE

Technical Support

YMGI offers full technical support for all of our heating and cooling systems. If you have any questions about the operation of your unit, please consult your owner's manual. It will help you understand unit operation, various functions, and proper operation and maintenance of your system.

If your HVAC technician has any questions about installation or service, we provide technical assistance at **866-833-3138 ext. 703**.



Customer Service

When you or your technician calls YMGI hotlines, you will always talk to a live person. Customer service and our commitment to quality are the most important parts of our business. We value each and every customer, and our goal is to exceed your expectations.

YMGI Group

601 Arrow Ln
O'Fallon, Missouri 63366
Phone: 1-866-833-3138
Fax: 1-866-377-3355

Sales:

sales@ymgigroup.com

Technical Support:

techsp@ymgigroup.com

Service & Warranty:

customerservice@ymgigroup.com



Warranty Overview

If you aren't satisfied, neither are we. Proper installation matters greatly to the performance and lifespan of your system. Having your system installed by a qualified HVAC installer is the first step.

If for any reason you do not receive a prompt response, you can call our 24 hour 7 days a week toll free number at 1-866-833-3138 ext.704 or email us at customerservice@ymgigroup.com.

To expedite service, please include a copy of your purchase invoice number, contractor installation invoice, unit model number and serial number, a full description of your problem, along with any photos or information that will help us resolve your issue as quickly as possible.

Quality & More

Stylish Looks

YMGI units have clean, modern styling and complement any decor.

Reliable Quality

YMGI products are designed using the latest technology and always keep the end user in mind. Using the highest quality parts, each YMGI unit is built to last. Best of all, every YMGI system is backed by our professional technical support.



YMGI is dedicated to designing, manufacturing and distributing the highest quality, energy saving and environmentally friendly air conditioner and heat pump products, while providing the best service and support to all of our customers. Our mission is to help build a sustainable, efficient and green world.

YMGI Symphony-Ductless & Ducted Heat Pump & Heat Recovery:

- **Symphony SOLAR DC Inverter**
(56) Single PV, 12-18K Btu/h
(86) Single Zone All DC 09-24K Btu/h
(55) Multi Zone Solar VRF 3, 4, 8, 16, and 24 Ton.
- **Symphony SOLO DC Inverter**
(57)2,3 Single Zone 16 SEER, 09-24K Btu/h
(58)2-Single Zone 16-22 SEER, 09-36K Btu/h
(58)4, (78)1-Single Zone 18-23 SEER, 09-36K Btu/h
- **Symphony CHOIR DC Inverter**
(59)2 DC Inverter Multiple Zone 16 SEER, 2x09K to 5x12K Btu/h (59)2S-DC Inverter Multiple Zone 16 SEER 6x09K to 9x09K Btu/h (59)4-DC Inverter Multiple Zone 21 SEER 5x09K to 5x12K Btu/h
- **Symphony VRF - DC Inverter HP or Heat Recovery up to 64 zones.**
- **Symphony HARMONY-Packaged Self-Contained**
42"x16" PTAC/PTHP Electric Heater or Hot Water Coil, and 26" TTWA
- **Symphony CONDUCTOR-Split Type Condensing Units**
Side Discharge SHCR & VPAK

YMGI Group

LOS ANGELES • ST. LOUIS • NEW YORK

601 Arrow Ln, O'Fallon, MO 63366

www.ymgigroup.com

Tel: 866-833-3138 • Fax: 866-377-3355

Email: info@YMGIgroup.com

Sales Representative or Distributor: