



# Super Dual Zone

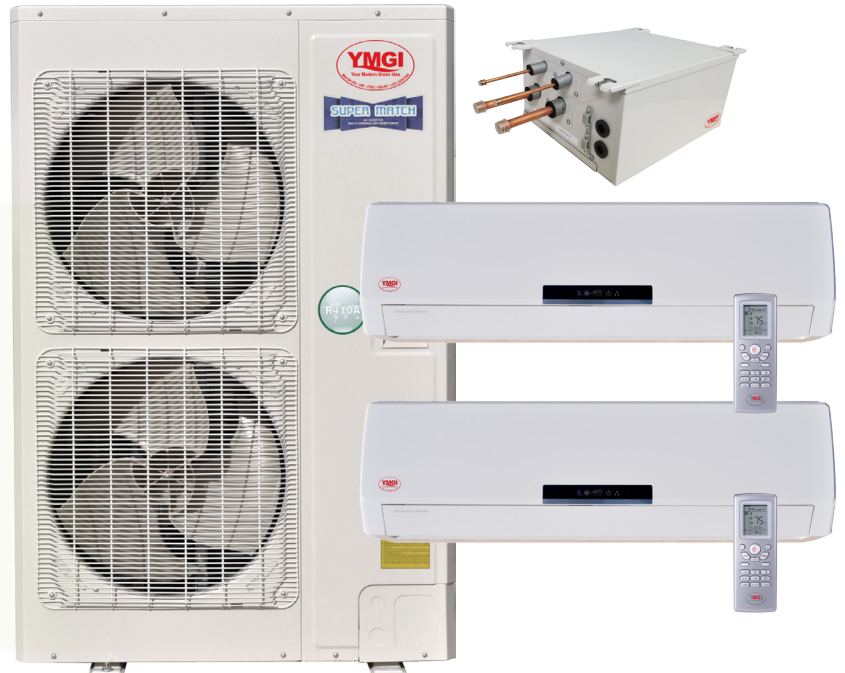
## 2x30 Heat Pump

### WMMS-2x30K-V2B(59)2

## Dual Zone Wall Mounted Mini Split System

16 SEER

- DC Inverter
- 2 x 30,000 BTU Cooling & Heating Capacities
- Easy Installation
- Quiet Operation
- Low Ambient  
5°F cooling / -4°F heating  
(-5°F cooling / -10°F heating  
with of 2 wind baffles)

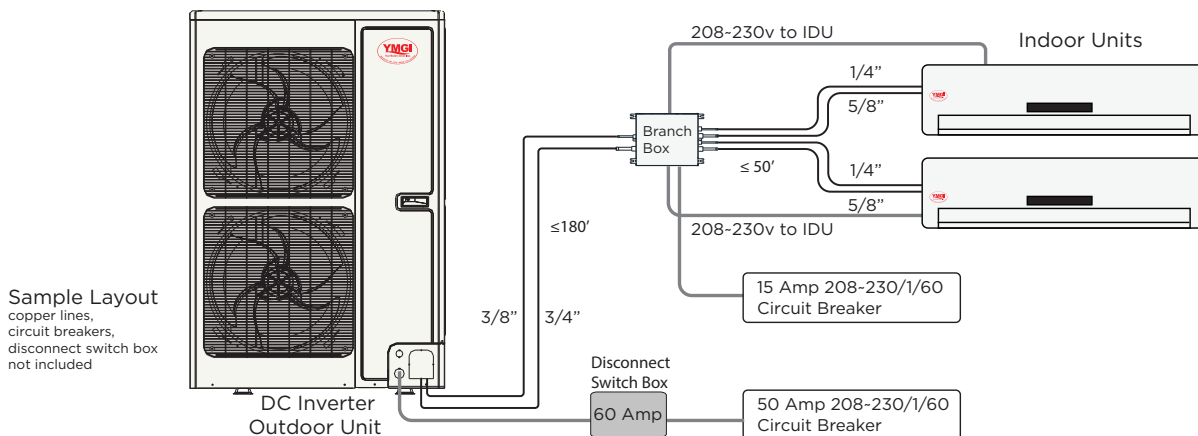
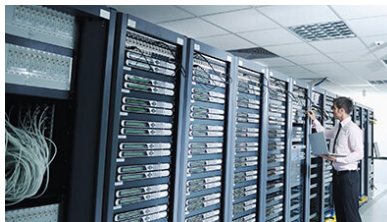


## Efficient and Powerful Dual Zone Heating & Cooling

Heat or cool your rooms with reduced energy costs. The 16 SEER DC Inverter system will save money while keeping you comfortable. Designed to use less electricity than a conventional air conditioner or heat pump of the same capacity. Two wall mounted indoor units come with remote controllers allowing you to set the temperature, timer, fan speed, swing function, and more. Each cooling zone can be set independently, or run just a single zone. The 2x30 can also provide optional controls that allows use with thermostats such as Nest, Trane, White-Rodgers, etc. as well as third party Wi-Fi controllers that allow you to use your smart phone and control the system remotely.

## Great for Residential, Commercial, Institutional and Industrial

Perfect for Grow Rooms, Computer Rooms, and Communication Towers





# Super Dual Zone

## 2x30 Heat Pump

### WMMS-2x30K-V2B(59)2

Outdoor Unit Model	WMMS-90CH-V2B(59)2	
Allowed Capacity Rating Totals-All Indoor Units	Btu/h	90,000 (2 Thermal Zones)
Cooling Capacity-Rating	Btu/h	52,900
Min. Cooling Capacity	Btu/h	3412
Max. Cooling Capacity	Btu/h	61,416
Heating Capacity-Rating	Btu/h	61,400
Min. Heating Capacity	Btu/h	4094
Max. Heating Capacity	Btu/h	63,122
EER	W/W	2.77
EER	Btu/h / W	9.45
COP	Btu/h / W	11.81
SEER	Btu/h / W	16
HSPF	Btu/h / W	8
Air Flow Volume	CFM	4120
Sound Pressure Level Low-High	dB(A)	43 - 58
Sound Power Level Low-High	dB(A)	52 - 68
Rated Input Ele. Power Supply	V	208-230 / 1 / 60
Cross-sectional Area of Power Cable Conductor	mm2	6.00
Recommended Power Cable (Multi-Strand)	AWG x N	8x3
Fuse Current	A	50
HVAC Type Circuit Breaker	A	50
Cooling Power Input	KW	5.60
Heating Power Input	KW	5.20
Rated Power Input	KW	6.50
Cooling Current Input	AMP	25
Heating Current Input	AMP	23
Rated Current	AMP	28
Starting Current	AMP	10
Compressor Make	-	Landa(LD)
Compressor Model	-	QXAS-F428zX050A or Equivalent
Compressor Type1	-	Inverter Rotary
Compressor Capacity	Btu/h	46076
Compressor Power Input	W	4580.01
Compressor Rated Load Amp (RLA)	A	23
Compressor Locked Rotor Amp (L.R.A)	A	-
Compressor Thermal Protector	-	NO
Compressor Crankcase	W	40
Compressor Refrigerant Oil Type	-	FV50S
Compressor Refrigerant Oil Charge Volume	L	1.35
Chassis Electrical Heater Power Input	W	140
Chassis Electrical Heater Current	A	0.6
Fan Type	-	Axial-flow
Fan Quantity	-	2
Fan Diameter / Height	mm	472 / 160
Motor Model	-	SWZ120A
Motor Type	-	DC Motor
Motor Insulation Class	-	B
Motor Safe Class	-	IP45
Overload Protector	-	NO
Motor Full Load Amp(FLA)	A	2
Fan Motor Drive Type	-	Built-in driver
Fan Motor Speed High to Low	RPM	864/760/608/464/352/280
Fan Motor Power Output / Input	W	120W / 150W
Fan Motor Capacitor	µF	NO
Condenser Material	-	Copper tube-hydrophilic aluminum foil
Condenser Face Area	Sq.Ft	13.89
Condenser Copper Pipe Diameter OD	Inch	5/16
Condenser Copper Pipe Rows	-	2
Condenser Tube Pitch (a)*Row Pitch(b)	Inch	3/4 * 7/8
Condenser Fin FPI	Fins	15

		WMMS-90CH-V2B(59)2	
Condenser Fin Type	-	Wave	
Condenser Fin Color	-	Blue	
Condenser L x D x H	Inch	27.3 x 11.3 x 52.0	
Condenser Max. Allowable Pressure	PSI	623	
Permissible Excessive Operating Pressure for the Discharge Side	PSI	580	
Permissible Excessive Operating Pressure for the Suction Side	PSI	145	
High Pressure Overload Protector	PSI	542	
Low Pressure Overload Protector	PSI	23.2	
Cooling Operation Ambient Temperature Range	°F	5 ~ 118	
Heating Operation Ambient Temperature Range	°F	-4 ~ 75	
Maximum IDU Qty.	Unit	9	
Defrosting Method	-	Automatic defrosting	
Isolation	-	I	
Moisture Protection	-	IPX5	
Overload Protector	-	NO	
R410A Refrigerant Charge	LBs	10.9	
Metering Device	-	Electronic expansion valve	
Dimension of Unit Net (WxDxH)	Inch	35.4 x 14.8 x 53.1	
Dimension of Carton Box (WxDxH)	Inch	38.6 x 17.3 x 54.4	
Weight Net / Gross	LBs	256 / 275	
Ref. Valve Connection		Flare	
Unit is Precharged for Maximum Pipe Length	Ft	null	
Refrigerant Charging Port		YES	
Connection Pipe Liquid Pipe Outer Diameter	Inch	3/8"	
Connection Pipe Gas Pipe Outer Diameter	Inch	3/4"	
Maximum allowable length	Between outdoor unit and BU	≤180	
	Between outdoor unit and indoor unit	≤ 300	
	Between BU module and indoor unit	≤ 50	
	Between indoor unit and the 1st branch	≤ 130	
Maximum allowable Elevation difference	Between outdoor and indoor units	≤ 100	
	Between outdoor units and BU	≤ 100	
	Between BU module and indoor unit	≤ 50	
	Between indoor unit and the 1st branch	≤ 50	
Minimum allowable length	Between outdoor and indoor units	≤ 15	
	Between outdoor units and BU	≤ 15	
<b>Branch Module Model</b>		<b>(59)2-ModuleS2B</b>	
Circuit Breaker	A	15	
<b>Indoor Unit (IDU) Model</b>		<b>WMMS-30E-V2B(58)2</b>	
Cooling Capacity	Btu/h	28,000 (9500-30,000)	
Heating Capacity	Btu/h	28,400 (10,000-33,000)	
Fan Motor Speed (SH / H / M / L)	RPM	1400 / 1300 / 1200 / 1000	
Air Flow Volume (SH/H/M/L)	CFM	740 / 670 / 640 / 580	
Dehumidifying Volume	Pints/Hr.	6.3	
Output of Fan Motor	w	40	
Fan Motor Capacitor	uF	3.5	
Fan Motor RLA	A	0.4	
Evaporator Coil Type		Aluminum fin-copper tube	
Coil length L x H x D	in.	42.25" x 15" x 1"	
Fuse		PCB 3.15A Transformer 0.2A	
Sound Pressure Level (SH/H/M/L)	dBa	52 / 50 / 48 / 40	
Outer Diameter Liquid Pipe	in.	1/4"	
Outer Diameter Gas Pipe	in.	5/8"	
Max Distance ID Above/Blow OD	ft.	50 / 60	
Max Distance Length	ft.	125	
Dimensions-Net W x H x D	in.	53.1 x 12.8 x 10.0	
Gross / Net Weight	lbs	60 / 44	

All specifications subject to change without notice. Images are for reference only. See website for full details.

**YMGI Group**  
 601 Arrow Ln, O'Fallon, Missouri 63366  
 Phone: 1-866-833-3138  
 Fax: 1-866-377-3355  
 ymgigroup.com

Sales Representative or Distributor: