



## Submittal Data Sheet: FRUE-28B Models

### UPBLAST ROOF FAN



FRUE-28B Models

#### Features:

- Designed for high temperature environments
- Aluminum Alloy components
- Most advanced blower motor cooling in it's class.
- Direct Drive and Belt Drive models
- Anti-explosion type is available
- ISO 9001:2018 controllable standard
- UL 762 test grant

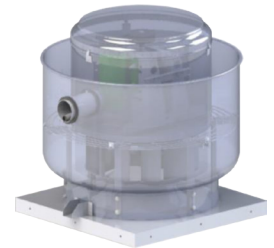
Job Name:		Tag #:	
Location		Date:	
Engineer:		Approval:	
Submitted to:		Unit #:	
Submitted by:		Drawing #:	
Reference		PO #:	

YMGI Upblast Roof Fans offer the latest features, and are designed to provide efficient and reliable operation for commercial industries. State-of-the-art manufacturing techniques include laser cut, extruded, and die cast parts, precision welding, and strict quality control testing to ensure years of trouble free use.

#### FRUE-28B Series

Made from laser cut aluminum alloy to ensure precision fit. The aluminum alloy base allows for easy installation. Galvanized steel driver cover can be opened without tools, for easy cleaning and maintenance. Each model has a unique motor bracket design, based on the motor orientation, and transmission type.

Different environments require different impeller materials. We offer carbon steel, stainless steel and aluminum alloy impellers. Impellers are built using laser cut and die cast parts. The impeller surface has an industrial strength coating for durability. Impeller balance test grades are in strict accordance with the G4.0 ISO1940. This series, roof blowers use an aluminum alloy wheel.



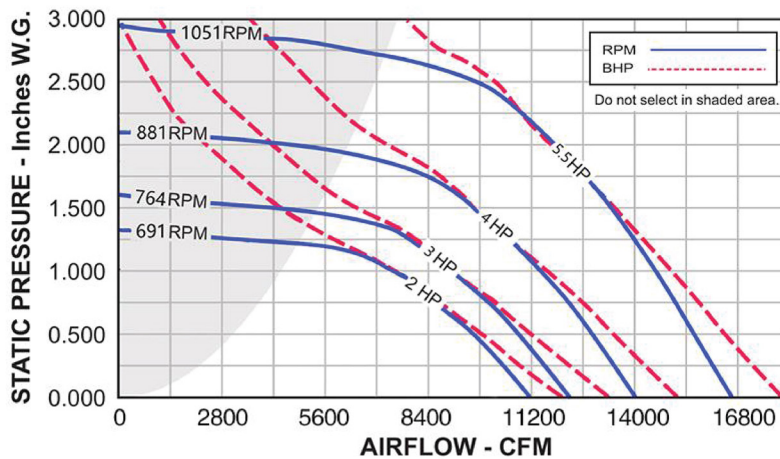
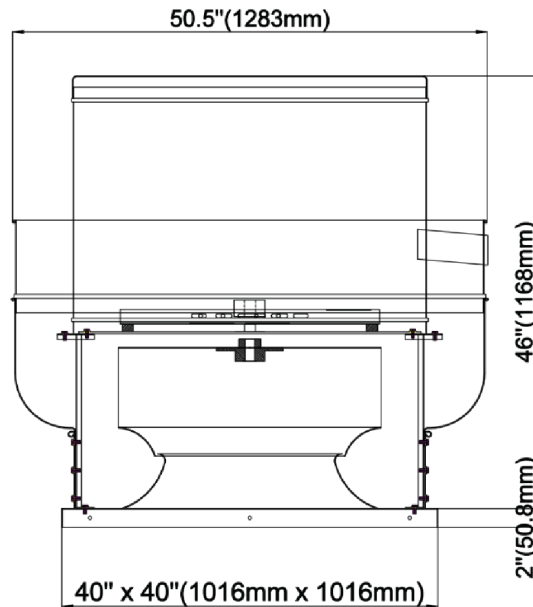
Model	AC motor 1Ø	AC motor 3Ø	HP	Fan Speed
<b>FRUE-28B-0BA</b> <b>FRUE-28B-0CA</b>	None	380V/50Hz or 60Hz	3.0HP	750RPM
		230V/50Hz or 60Hz	3.0HP	
	None	380V/50Hz or 60Hz	4.0HP	850RPM
		230V/50Hz or 60Hz	4.0HP	
	None	380V/50Hz or 60Hz	5.5HP	950RPM
		230V/50Hz or 60Hz	5.5HP	

CFM	Static Pressure in Inches W.G.																					
	0.000		0.250		0.500		0.750		1.000		1.250		1.500		1.750		2.000		2.250		2.500	
	RPM	RPM	RPM	RPM	RPM	RPM	RPM	RPM	RPM	RPM	RPM	RPM	RPM	RPM	RPM	RPM	RPM	RPM	RPM	RPM	RPM	RPM
6783					650		705		757		807		867		907							
			9.7	1.12	10.6	1.43	12.2	1.81	13.7	2.29	15.1	2.71	16.4	3.18								
8134			650		707		756		802		846 888		931 972		1013 1055		846 888		931 972		1013 1055	
			11.2	0.98	11.8	1.43	12.6	1.83	13.6	2.31	14.8	2.8	15.9	3.22	17	3.76	18.3	4.23	19.4	4.99	21	5.34
9496	670		719		767		812		853		893		932		969		1006					
	13.2	0.98	13.7	1.4	13.8	1.89	15.2	2.39	15.9	2.89	16.1	3.43	17.1	3.91	19.1	4.5	19.8	5.23				
10853	744		787		830		872		909		946		981		1015							
	14.6	1.45	16.3	1.92	17	2.45	17	3.01	18.2	3.63	19.3	4.07	21	4.87	21	5.23						
12209	819		857		895		932		968		1002											
	17.4	2.01	18.9	2.56	20	3.01	19	3.82	22	4.45	23	5.2										
13580	893		923		962		996		1029													
	20	2.8	22	3.4	23	3.98	24	4.67	25	5.33												
14924	967		998		1030																	
	26	3.78	26	4.45	27	4.98																
16282	1045																					
	29	4.9																				



# Submittal Data Sheet: FRUE-28B Models

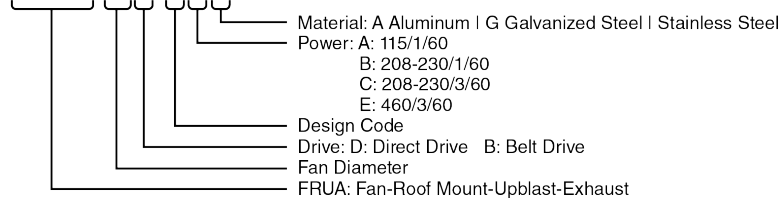
## UPBLAST ROOF FAN



## YMGI Model Nomenclature

### Model Number:

FRUE-10D-OAA



## Applications:

- Factory Exhaust
- Low noise Industry
- Restaurant Grease Exhaust
- Agricultural area

### YMGI Group

601 Arrow Ln, O'Fallon, Missouri 63366  
 Phone: 1-866-833-3138  
 Fax: 1-866-377-3355  
 ymgigroup.com  
 sales@ymgigroup.com

Sales Representative or Distributor: