



Submittal Data Sheet: WMMS-30CH-U2B(59)6

OUTDOOR UNIT

**HEATS DOWN
to -31°F**



WMMS-30CH-U2B(59)6
2 zones

ACCESSORIES

- MOUNTING BRACKETS
- FOOT RISERS
- COPPER/WIRE/ACC.SET
- LINESET COVERS
- WINTER WIND BAFFLE

Model	WMMS-30CH-U2B(59)6	
Dimension of Outline (WxDxH)	in.	39.49x16.81x31.10
Dimension of Carton Box (LxWxH)	in.	42.52x19.09x33.07
Dimension of Package (LxWxH)	in.	42.64x19.21x33.66
Net Weight	lbs.	171.96
Gross Weight	lbs.	182.98
Liquid Pipe Valve Sizes	in.	2 x 1/4"
Gas Pipe Valve Sizes	in.	2 x 3/8"
Connection Pipe Connection Method		Flare Connection
R410A Refrigerant Charge	ft	65.62
Not Additional Gas	oz	77.6027
Connection Pipe Length		
Connection Pipe Gas Additional Charge	g/m	20
Connection Pipe Max. Height Distance (indoor and outdoor)	ft	26.25
Max. equivalent connection pipe length (outdoor to last indoor)	ft	82.02

Job Name:		Tag #:	
Location		Date:	
General Contractor:		Mechanical Contractor:	
Sales Representative:		Sales Engineer:	
Submitted by:		Drawing #:	
Reference		PO #:	

The CHOIR (59)6 outdoor condensing unit can heat down to -22 °F at 80% efficiency, and has a 23 SEER rating. With a 30k Btu/h capacity it is capable of heating and cooling 2 zones. The (59)6 requires 208-230v, 1 phase, 60Hz power supply. Its compact design allows for installation on the ground, on a wall, or under a deck or a balcony.

Model	WMMS-30CH-U2B(59)6	
Cooling Capacity Min/Std/Max	Btu/h	6998 / 18000 / 21001
Heating Capacity Min/Std/Max	Btu/h	7000 / 21000 / 26000
EER	(Btu/h)/W	12.50
COP	(Btu/h)/W	12.30
SEER		23.00
HSPF		10.50
Air Flow Volume	CFM	2530.55
Sound Pressure Level	dB(A)	58
Sound Power Level	dB(A)	68
Rated Voltage / Frequency / Phase	V	208/230 / 60 / 1
Cross-sectional Area of Power Cable Conductor	mm2	5.3(AWG10)
Recommended Power Cable(Core)	N	3
Fuse Current	A	30
Circuit Breaker	A	35
Cooling Power Input / Heating Power Input	kW	1.45 / 1.71
Rated Power Input	kW	5.00
Cooling Current Input / Heating Current Input	A	6.3 / 7.4
Rated Current	A	22.00
Starting Current	A	5
Compressor Model1		QXFW-D318zX035
Compressor Type1		Inverter Rotary
Compressor Capacity	W	/
Compressor Power Input	W	/
Compressor Rated Load Amp (RLA)	A	14.9
Compressor Locked Rotor Amp (L.R.A)	A	/
Compressor Thermal Protector		/
Compressor Crankcase	W	40
Compressor Refrigerant Oil Type		FW68DA or equivalent
Compressor Refrigerant Oil Charge Volume	L	0.95
Chassis Electrical Heater Power Input	W	160
Chassis Electrical Heater Current	A	/
Fan Quantity / Type		1 / Axial-flow
Motor Model		LW92S-ZL
Motor Type		DC motor
Motor Insulation Class		B/E
Motor Safe Class		IPX4
Overload Protector		/
Motor Full Load Amp(FLA)	A	/
Fan Motor Drive Type		Direct drive
Fan Motor Speed	rpm	880
Fan Motor Power Output	W	90
Condenser Material		Aluminum Fin-copper Tube
Condenser Number of Rows x Pipe Diameter	in.	2 x 5/16"
Condenser Fin Type / Color		corrugated fin / Blue
Condenser Length(L) x Height(H) x Width(W)	in.	38 43/64" x 29 29/64" x 1 1/2"
Condenser Max. Allowable Pressure	MPa	10
Permissible Excessive Operating Pressure for the Discharge Side	MPa	4.3
Permissible Excessive Operating Pressure for the Suction Side	MPa	2.5
Maximum Allowable Pressure	MPa	4.3
High Presser Overload Protector	MPa	4.4
Low Presser Overload Protector	MPa	/
Cooling Operation Amb. Temperature Range	°F	-0.4~-114.8
Heating Operation Amb. Temperature Range	°F	-31~-75.2
Maximum drive IDU NO.	unit	2
Defrosting Method	--	Automatic Defrosting
Isolation		1
Moisture Protection	--	IPX4
Overload Protector		Current temperature control mechanical
Throttling Method		Electronic expansion valve
Low Ambient Cooling Function		YES
Defrosting Time Set Function		NO
Low Voltage Startup		YES
Compressor With Electric Heater		YES
Chassis With Electric Heater		YES



COOLING PERFORMANCE

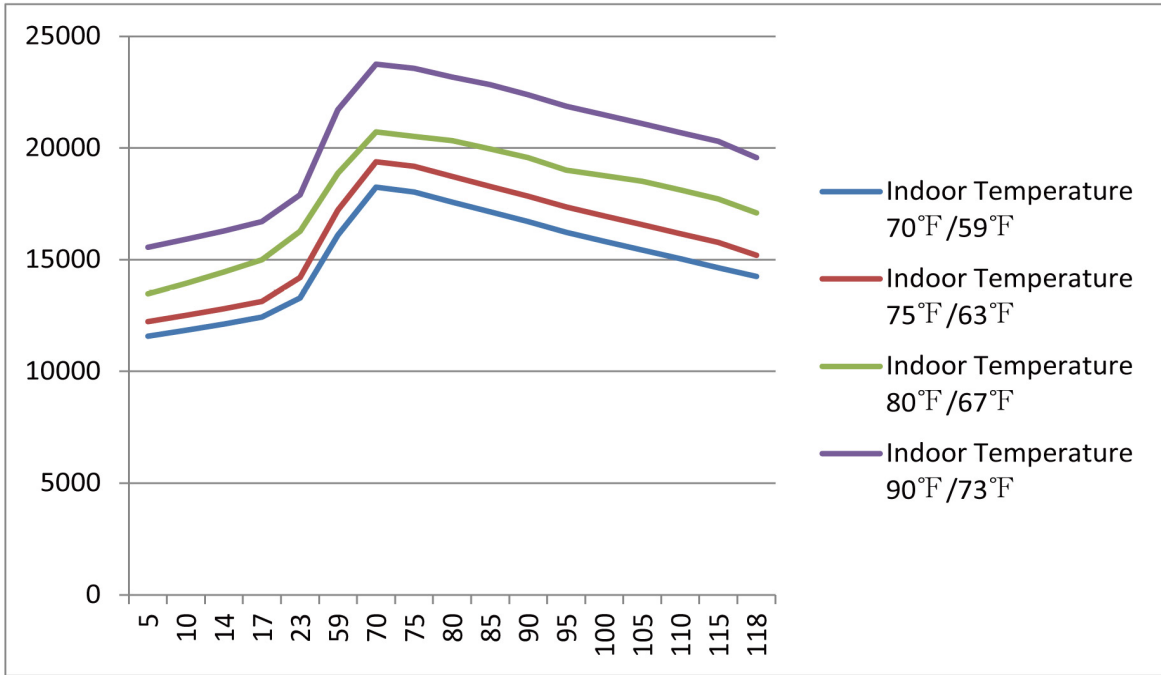
DB WB		Indoor Ambient Temperature											
		70°F (21°C) 59°F (15°C)			75°F (24°C) 63°F (17°C)			80°F (27°C) 67°F (19°C)			90°F (32°C) 73°F (23°C)		
		TC (BtuH)	SC (BtuH)	Input Power (watts)	TC (BtuH)	SC (BtuH)	Input Power (watts)	TC (BtuH)	SC (BtuH)	Input Power (watts)	TC (BtuH)	SC (BtuH)	Input Power (watts)
Outdoor Ambient Temperature (DB)	5 (-15°C)	11,573	9,076	727	12,235	9,586	749	13,473	10,571	799	15,560	12,193	854
	10 (-12°C)	11,836	9,282	737	12,508	9,803	760	13,943	10,938	810	15,910	12,471	867
	14 (-10°C)	12,122	8,507	742	12,806	10,040	765	14,453	11,336	816	16,289	12,773	873
	17 (-8°C)	12,432	9,751	742	13,129	10,296	765	15,004	11,765	816	16,701	13,100	873
	23 (-5°C)	13,281	10,418	742	14,206	11,143	765	16,277	12,766	810	17,904	14,043	867
	59 (15°C)	16,106	12,631	856	17,227	13,510	878	18,867	14,793	935	21,717	17,032	1003
	70 (21°C)	18,240	14,306	1258	19,380	15,197	1298	20,710	16,243	1377	23,750	18,630	1473
	75 (24°C)	18,025	14,139	1292	19,171	15,037	1332	20,520	16,096	1417	23,560	18,476	1519
	80 (27°C)	17,581	13,786	1349	18,721	14,684	1394	20,330	15,948	1479	23,180	18,180	1587
	85 (30°C)	17,138	13,440	1445	18,278	14,338	1490	19,950	15,647	1581	22,832	17,905	1694
	90 (32°C)	16,701	13,100	1507	17,835	13,985	1553	19,570	15,351	1649	22,376	17,552	1768
	95 (35°C)	16,220	12,721	1553	17,353	13,607	1598	19,000	14,902	1700	21,869	17,154	1819
	100 (38°C)	15,827	12,413	1575	16,954	13,299	1626	18,753	14,710	1728	21,476	16,846	1853
	105 (40°C)	15,434	12,105	1604	16,562	12,991	1655	18,506	14,517	1757	21,084	16,532	1881
110 (43°C)	15,035	11,791	1621	16,169	12,676	1672	18,113	14,203	1779	20,685	16,224	1904	
115 (46°C)	14,643	11,483	1638	15,770	12,368	1689	17,721	13,895	1796	20,292	15,916	1921	
118 (48°C)	14,250	11,175	1655	15,200	11,919	1706	17,100	13,414	1813	19,570	15,351	1938	

HEATING PERFORMANCE

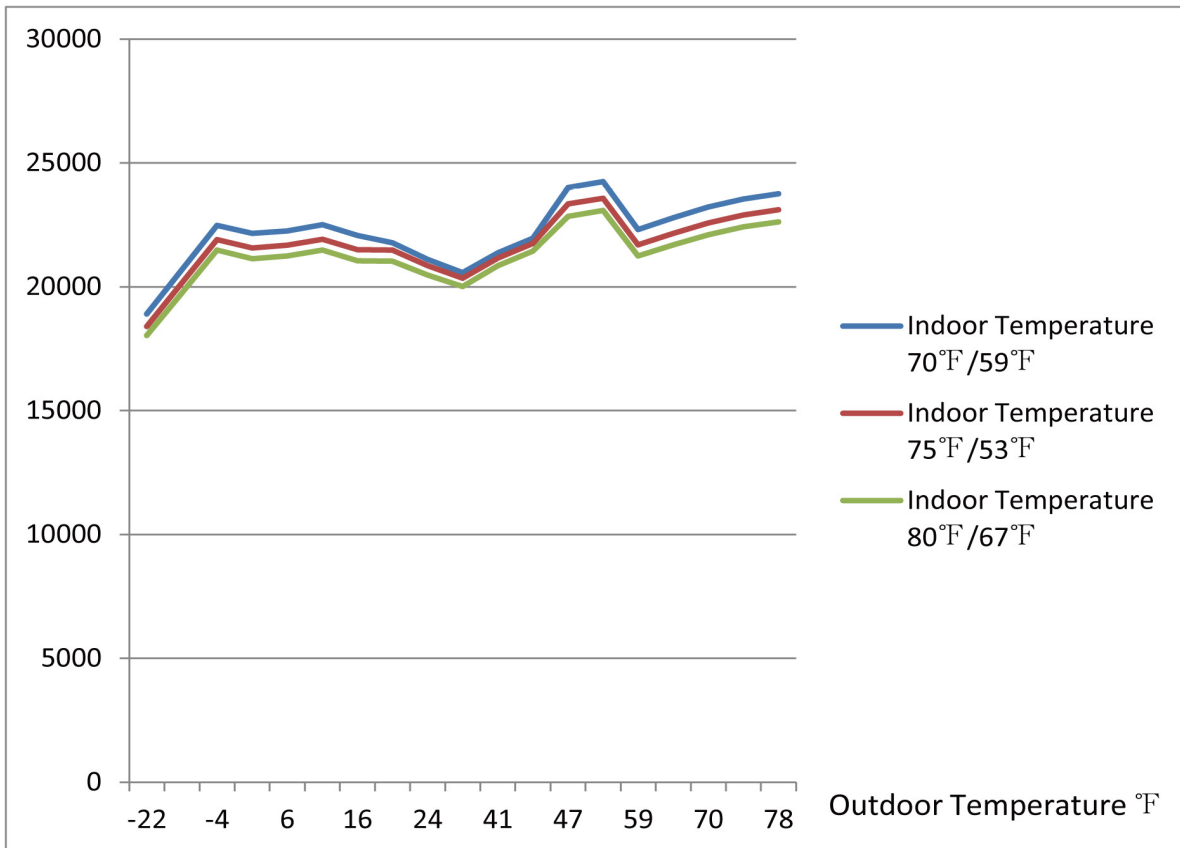
DB WB		Indoor Ambient Temperature											
		70°F (21°C) 59°F (15°C)			75°F (24°C) 63°F (17°C)			80°F (27°C) 67°F (19°C)			90°F (32°C) 73°F (23°C)		
		TC (BtuH)	SC (BtuH)	Input Power (watts)	TC (BtuH)	SC (BtuH)	Input Power (watts)	TC (BtuH)	SC (BtuH)	Input Power (watts)	TC (BtuH)	SC (BtuH)	Input Power (watts)
Outdoor Ambient Temperature (DB)	-22 (-30°C)	18,902	18,902	4918	18,401	18,401	5031	18,030	18,030	5132			
	-13 (-25°C)	20,698	20,698	4988	20,160	20,160	5103	19,762	19,762	5205			
	-4 (-20°C)	22,479	22,479	4285	21,906	21,906	4385	21,482	21,482	4472			
	-0.4 (-18°C)	22,148	22,148	4203	21,565	21,565	4300	21,130	21,130	4386			
	6 (-14°C)	22,251	22,251	4066	21,672	21,672	4160	21,245	21,245	4244			
	10 (-12°C)	22,498	22,498	4027	21,913	21,913	4121	21,475	21,475	4203			
	16 (-9°C)	22,072	22,072	3884	21,492	21,492	3973	21,053	21,053	4053			
	19 (-7°C)	21,778	21,778	3474	21,478	21,478	3555	21,036	21,036	3626			
	24 (-4°C)	21,108	21,108	3130	20,856	20,856	3202	20,478	20,478	3266			
	32 (0°C)	20,566	20,566	2942	20,339	20,339	3010	20,008	20,008	3071			
	41 (5°C)	21,375	21,375	2723	21,165	21,165	2786	20,848	20,848	2842			
	43 (6°C)	21,960	21,960	2130	21,750	21,750	2179	21,440	21,440	2223			
	47 (8.3°C)	24,000	24,000	2179	23,340	23,340	2229	22,846	22,846	2274			
	53 (12°C)	24,240	24,240	1980	23,573	23,573	2026	23,079	23,079	2066			
	59 (15°C)	22,316	22,316	1999	21,695	21,695	2045	21,236	21,236	2086			
	64 (18°C)	22,788	22,788	1833	22,160	22,160	1876	21,695	21,695	1913			
	70 (21°C)	23,220	23,220	1862	22,579	22,579	1905	22,100	22,100	1943			
75 (24°C)	23,544	23,544	1701	22,896	22,896	1741	22,417	22,417	1775				
78 (26°C)	23,760	23,760	1717	23,105	23,105	1756	22,619	22,619	1791				



Cooling Capacity (Btu)



Heating Capacity (Btu)

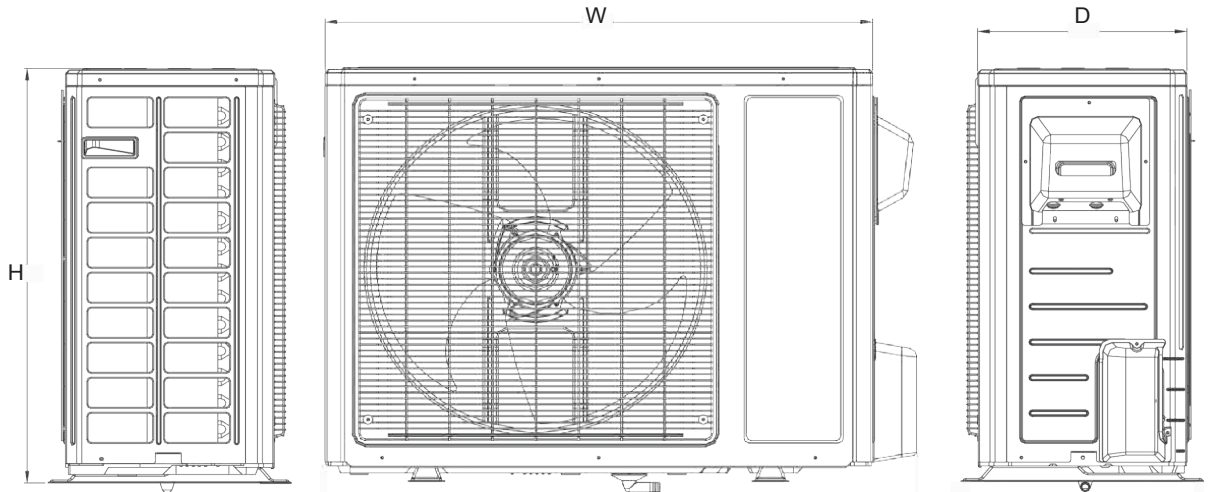
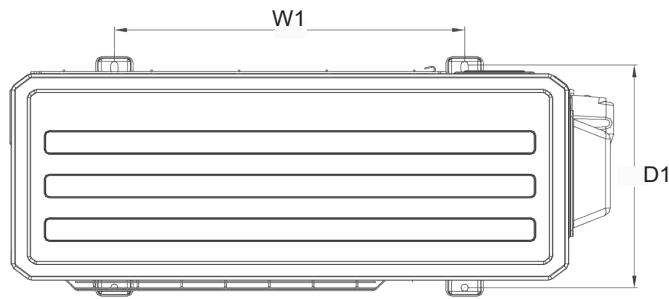




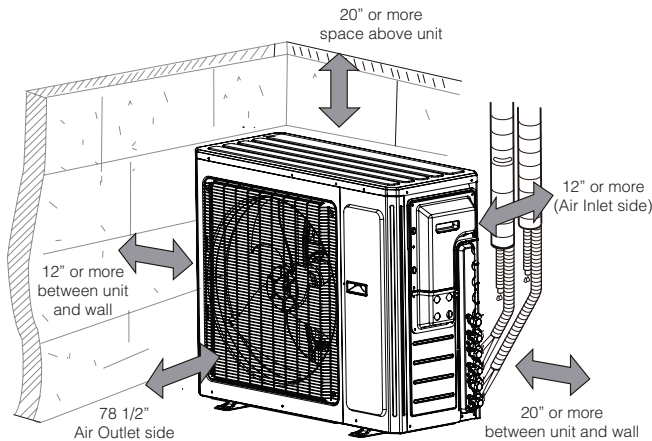
Submittal Data Sheet: WMMS-30CH-U2B(59)6

OUTDOOR UNIT

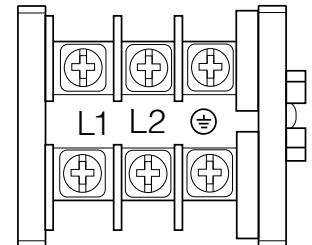
Dimensions (inches)	
W	37.63"
H	27.56"
D	15.63"



CLEARANCES



TERMINAL BLOCK



FEATURES

- Heats down to -31 °F
- 208-230/1/60 power input
- Quiet and efficient heating & cooling.
- DC Inverter technology
- Wide working ambient temperature ranges
- Compact outdoor unit with side discharge
- Outdoor unit ships pre-charged.
- High quality compressors
- Durable powder coated cabinet
- Standard flare brass connection valves
- Built to ETL/UL/CSA/AHRI standards
- Easy installation and maintenance

YMGI Group
 601 Arrow Ln, O'Fallon, Missouri 63366
 Phone: 1-866-833-3138
 Fax: 1-866-377-3355
 ymgigroup.com
 sales@ymgigroup.com

Sales Representative or Distributor: