



## Submittal Data Sheet: WMMS-30CH-U2B(59)5

### OUTDOOR UNIT

HEATS DOWN  
to -22°F



**WMMS-30CH-U2B(59)5**  
2 zones

### ACCESSORIES

- MOUNTING BRACKETS
- FOOT RISERS
- COPPER/WIRE/ACC.SET
- LINESET COVERS
- WINTER WIND BAFFLE

Model		WMMS-30CH-U2B(59)5
Dimension (WXDXH)	inch	32 23/64 x 13 55/64 x 21 21/32
Dimension of Package (LXWXH)	inch	34 7/32 x 15 35/64 x 23 25/64
Net Weight	lbs.	77.2
Gross Weight	lbs.	82.7
Liquid Pipe Valve Sizes	in.	2 x 1/4"
Gas Pipe Valve Sizes	in.	2 x 3/8"
Connection Pipe Connection Method		Flare Connection
R410A Refrigerant Charge	ft	45.9
Not Additional Gas Connection Pipe Length	ft	32.8
Connection Pipe Gas Additional Charge	oz/ft.	0.2
Connection Pipe Max. Height Distance (indoor and indoor)	ft	49.2
Connection Pipe Max. Length Distance (total length)	ft	131.2

Job Name:		Tag #:	
Location		Date:	
General Contractor:		Mechanical Contractor:	
Sales Representative:		Sales Engineer:	
Submitted by:		Drawing #:	
Reference		PO #:	

The CHOIR (59)5 outdoor condensing unit can heat down to -22 °F at 80% efficiency, and has a 21 SEER rating. With a 30k Btu/h capacity it is capable of heating and cooling 2 zones. The (59)5 requires 208-230v, 1 phase, 60Hz power supply. Its compact design allows for installation on the ground, on a wall, or under a deck or a balcony.

Model		WMMS-30CH-U2B(59)5
Power supply	v / Hz / ph	208-230 / 60 / 1
Cooling capacity	Btu/h	17,000 - 23,800
Heating capacity	Btu/h	18,000 - 25,200
Cooling Power Input	W	1420
Heating Power Input	W	1380
Cooling Current Input	A	6.28
Heating Current Input	A	6.12
Rated Power Input	W	2300/2100
Rated Current	A	10.0/9.0
EER	(Btu/h)/W	12.00
COP	(Btu/h)/W	13.03
SEER		21.00(SEER) 21.00(SEER2)
HSPF		10.00(HSPF) 10.00(HSPF2)

**Connectable IDU Capacity Btu/h Total-Ranges:**

Residential	Btu/h	12,000 - 30,000
Commercial	Btu/h	12,000 - 24,000
Compressor Trademark		Zhuhai Landa Compressor Co., LTD.
Compressor Model		QXF-A139zH170A
Compressor Refrigerant Oil Type		FW68DA or equivalent
Compressor Type		Inverter Rotary
L.R.A	A	25
Compressor Rated Load Amp (RLA)	A	9.95
Compressor Power Input	W	1295
Compressor Thermal Protector		KSD1150C HPC115/95U1
Throttling Method		Electron expansion valve
Cooling Operation Ambient Temperature Range	°F	-22~118
Heating Operation Ambient Temperature Range	°F	-22~75.2
Condenser Material		Aluminum Fin-copper Tube
Condenser Pipe Diameter	mm	7.94
Rows-Fin Gap(mm)	mm	2-1.4
Coil length (l) X height (H) X coil width (L)	mm	834x528x38.1
Fan Motor Speed (rpm)	rpm	cooling:900 heating:900
Output of Fan Motor	W	30
Fan Motor RLA	A	/
Fan Motor Capacitor	µF	/
Air Flow Volume of Outdoor Unit	CFM	1354
Fan Type-Piece		Axial-flow
Fan Diameter	mm	420-131.1
Defrosting Method		Automatic Defrosting
Climate Type		T1
Isolation		I
Moisture Protection		IPX4
Permissible Excessive Operating Pressure for the Discharge Side	PSIG	550
Permissible Excessive Operating Pressure for the Suction Side	PSIG	240
Cross-sectional Area of Power Cable Conductor	sq in	0.0032 AWG14
Recommended Power Cable(Core)	N	3
Outer Diameter of Liquid Pipe1   Liquid Pipe2	inch	1/4"   1/4"
Outer Diameter of Gas Pipe1   Gas Pipe2	inch	3/8"   3/8"
Connection Pipe Max. Height Distance (indoor and outdoor and outdoor up)	ft	49.2
Max. equivalent connection pipe length (outdoor to last indoor)	ft	65.6

Outdoor Unit



### COOLING PERFORMANCE

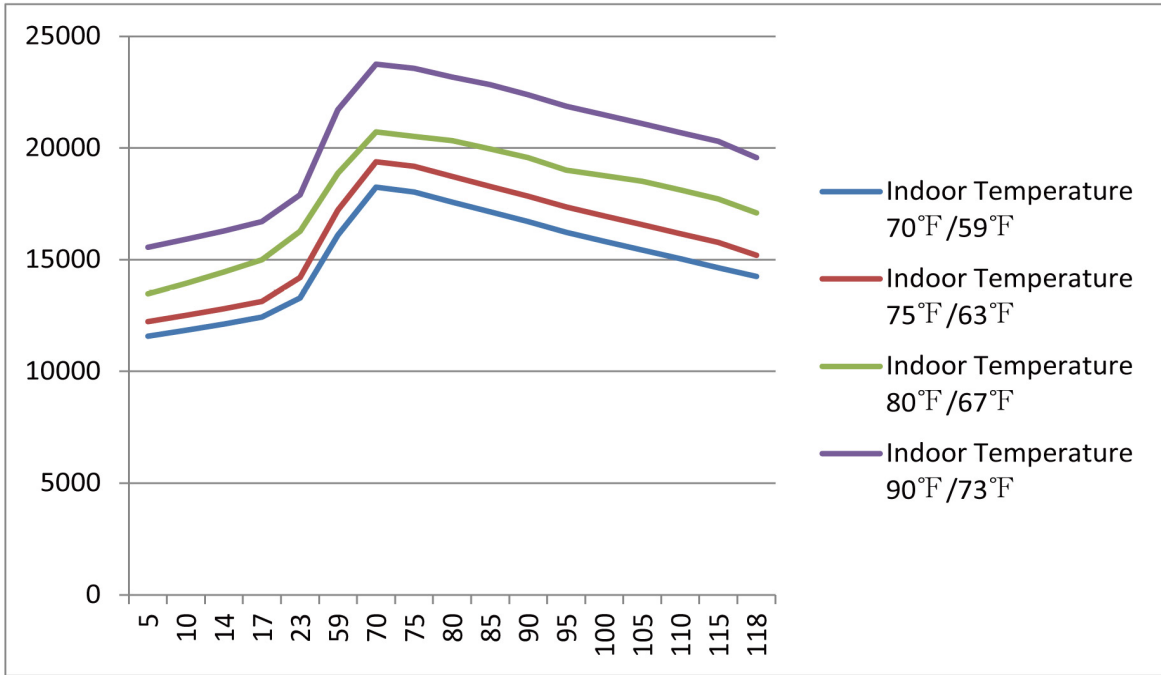
DB WB		Indoor Ambient Temperature											
		70°F (21°C) 59°F (15°C)			75°F (24°C) 63°F (17°C)			80°F (27°C) 67°F (19°C)			90°F (32°C) 73°F (23°C)		
		TC (BtuH)	SC (BtuH)	Input Power (watts)	TC (BtuH)	SC (BtuH)	Input Power (watts)	TC (BtuH)	SC (BtuH)	Input Power (watts)	TC (BtuH)	SC (BtuH)	Input Power (watts)
Outdoor Ambient Temperature (DB)	5 (-15°C)	11,573	9,076	727	12,235	9,586	749	13,473	10,571	799	15,560	12,193	854
	10 (-12°C)	11,836	9,282	737	12,508	9,803	760	13,943	10,938	810	15,910	12,471	867
	14 (-10°C)	12,122	8,507	742	12,806	10,040	765	14,453	11,336	816	16,289	12,773	873
	17 (-8°C)	12,432	9,751	742	13,129	10,296	765	15,004	11,765	816	16,701	13,100	873
	23 (-5°C)	13,281	10,418	742	14,206	11,143	765	16,277	12,766	810	17,904	14,043	867
	59 (15°C)	16,106	12,631	856	17,227	13,510	878	18,867	14,793	935	21,717	17,032	1003
	70 (21°C)	18,240	14,306	1258	19,380	15,197	1298	20,710	16,243	1377	23,750	18,630	1473
	75 (24°C)	18,025	14,139	1292	19,171	15,037	1332	20,520	16,096	1417	23,560	18,476	1519
	80 (27°C)	17,581	13,786	1349	18,721	14,684	1394	20,330	15,948	1479	23,180	18,180	1587
	85 (30°C)	17,138	13,440	1445	18,278	14,338	1490	19,950	15,647	1581	22,832	17,905	1694
	90 (32°C)	16,701	13,100	1507	17,835	13,985	1553	19,570	15,351	1649	22,376	17,552	1768
	95 (35°C)	16,220	12,721	1553	17,353	13,607	1598	19,000	14,902	1700	21,869	17,154	1819
	100 (38°C)	15,827	12,413	1575	16,954	13,299	1626	18,753	14,710	1728	21,476	16,846	1853
	105 (40°C)	15,434	12,105	1604	16,562	12,991	1655	18,506	14,517	1757	21,084	16,532	1881
110 (43°C)	15,035	11,791	1621	16,169	12,676	1672	18,113	14,203	1779	20,685	16,224	1904	
115 (46°C)	14,643	11,483	1638	15,770	12,368	1689	17,721	13,895	1796	20,292	15,916	1921	
118 (48°C)	14,250	11,175	1655	15,200	11,919	1706	17,100	13,414	1813	19,570	15,351	1938	

### HEATING PERFORMANCE

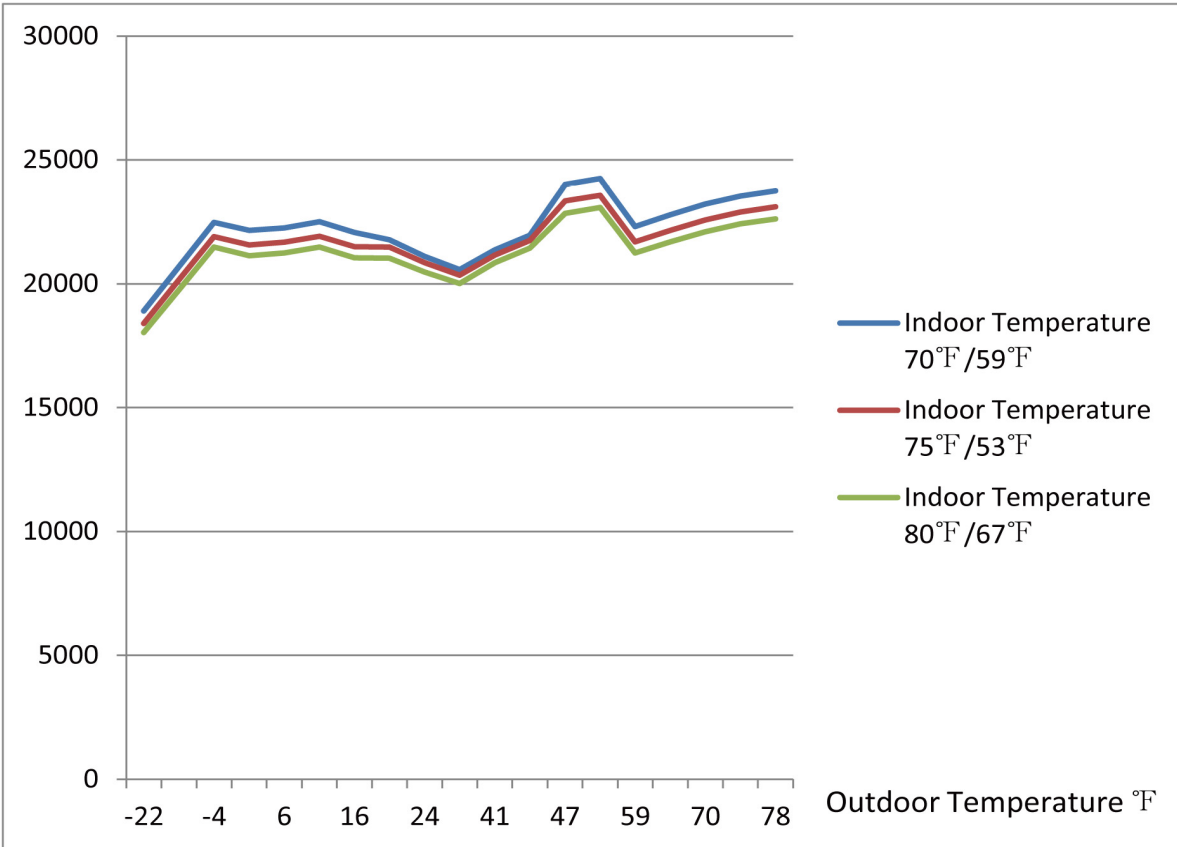
DB WB		Indoor Ambient Temperature											
		70°F (21°C) 59°F (15°C)			75°F (24°C) 63°F (17°C)			80°F (27°C) 67°F (19°C)			90°F (32°C) 73°F (23°C)		
		TC (BtuH)	SC (BtuH)	Input Power (watts)	TC (BtuH)	SC (BtuH)	Input Power (watts)	TC (BtuH)	SC (BtuH)	Input Power (watts)	TC (BtuH)	SC (BtuH)	Input Power (watts)
Outdoor Ambient Temperature (DB)	-22 (-30°C)	18,902	18,902	4918	18,401	18,401	5031	18,030	18,030	5132			
	-13 (-25°C)	20,698	20,698	4988	20,160	20,160	5103	19,762	19,762	5205			
	-4 (-20°C)	22,479	22,479	4285	21,906	21,906	4385	21,482	21,482	4472			
	-0.4 (-18°C)	22,148	22,148	4203	21,565	21,565	4300	21,130	21,130	4386			
	6 (-14°C)	22,251	22,251	4066	21,672	21,672	4160	21,245	21,245	4244			
	10 (-12°C)	22,498	22,498	4027	21,913	21,913	4121	21,475	21,475	4203			
	16 (-9°C)	22,072	22,072	3884	21,492	21,492	3973	21,053	21,053	4053			
	19 (-7°C)	21,778	21,778	3474	21,478	21,478	3555	21,036	21,036	3626			
	24 (-4°C)	21,108	21,108	3130	20,856	20,856	3202	20,478	20,478	3266			
	32 (0°C)	20,566	20,566	2942	20,339	20,339	3010	20,008	20,008	3071			
	41 (5°C)	21,375	21,375	2723	21,165	21,165	2786	20,848	20,848	2842			
	43 (6°C)	21,960	21,960	2130	21,750	21,750	2179	21,440	21,440	2223			
	47 (8.3°C)	24,000	24,000	2179	23,340	23,340	2229	22,846	22,846	2274			
	53 (12°C)	24,240	24,240	1980	23,573	23,573	2026	23,079	23,079	2066			
	59 (15°C)	22,316	22,316	1999	21,695	21,695	2045	21,236	21,236	2086			
	64 (18°C)	22,788	22,788	1833	22,160	22,160	1876	21,695	21,695	1913			
70 (21°C)	23,220	23,220	1862	22,579	22,579	1905	22,100	22,100	1943				
75 (24°C)	23,544	23,544	1701	22,896	22,896	1741	22,417	22,417	1775				
78 (26°C)	23,760	23,760	1717	23,105	23,105	1756	22,619	22,619	1791				



### Cooling Capacity (Btu)



### Heating Capacity (Btu)

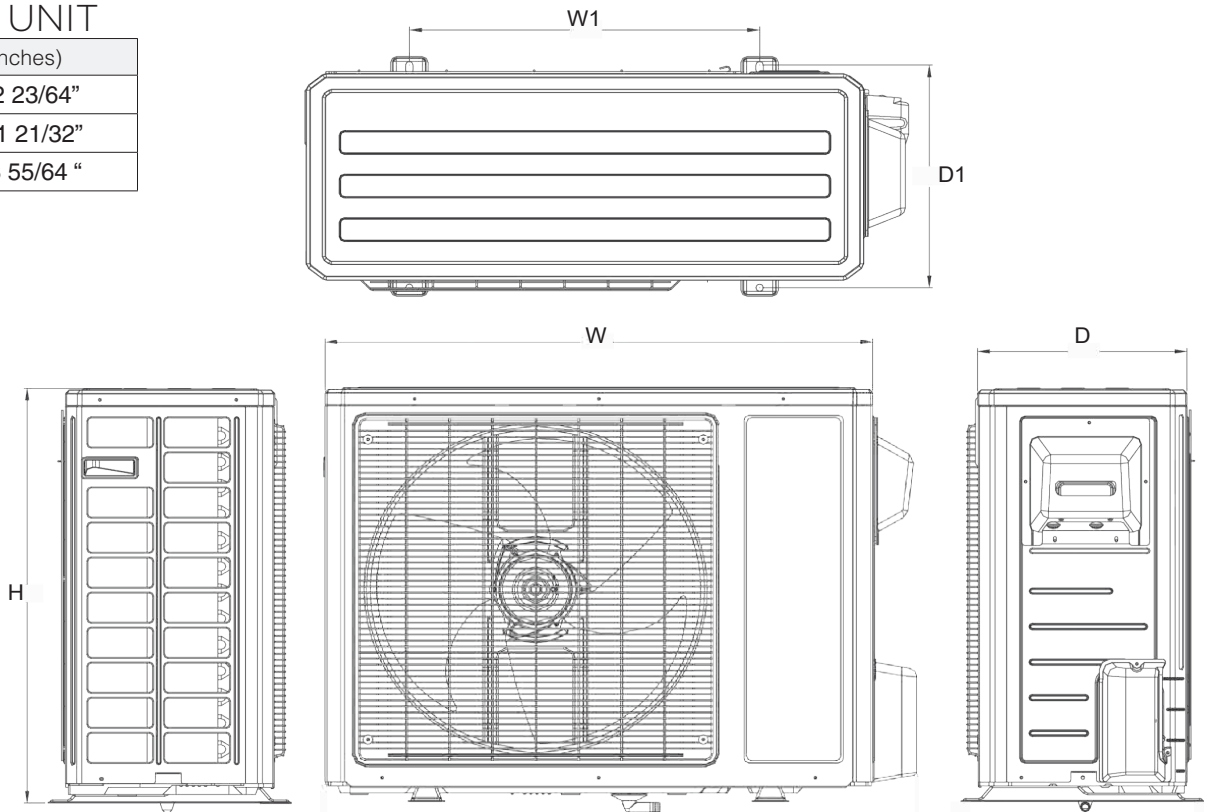




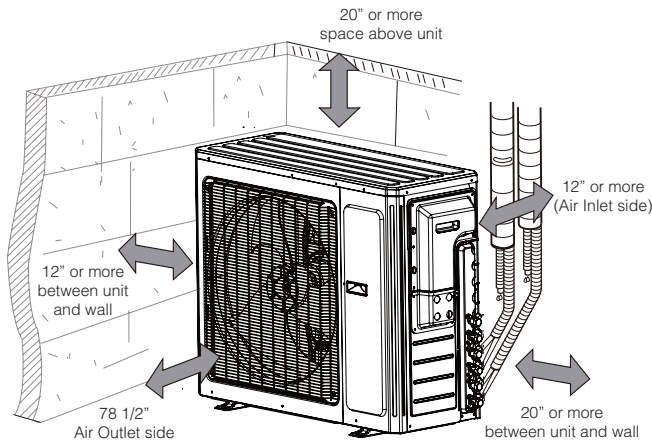
# Submittal Data Sheet: WMMS-30CH-U2B(59)5

## OUTDOOR UNIT

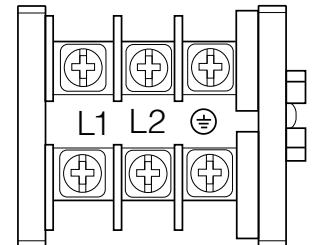
Dimensions (inches)	
W	32 23/64"
H	21 21/32"
D	13 55/64 "



## CLEARANCES



## TERMINAL BLOCK



## FEATURES

- Heats down to -22 °F
- 208-230/1/60 power input
- Quiet and efficient heating & cooling.
- DC Inverter technology
- Wide working ambient temperature ranges
- Compact outdoor unit with side discharge
- Outdoor unit ships pre-charged.
- High quality compressors
- Durable powder coated cabinet
- Standard flare brass connection valves
- Built to ETL/UL/CSA/AHRI standards
- Easy installation and maintenance

**YMGI Group**  
 601 Arrow Ln, O'Fallon, Missouri 63366  
 Phone: 1-866-833-3138  
 Fax: 1-866-377-3355  
 ymgigroup.com  
 sales@ymgigroup.com

Sales Representative or Distributor: